



W+D Winkler+Dünnebier TIprint 4dL

Introduction

TIprint 4dL is a digital print option for W+D envelope inserting systems. Its print operation is an integrated part of the envelope inserting process.

The Fiery XF driver generates print data. The actual job submission to the TIprint controller is done by a workflow application in front, which

- takes care about the inserts
- submits single page PDFs to Fiery XF hotfolder, including header and footer pages
- submits a 34 character command to the TIprint system

This document provides information on how to use Fiery XF for the W+D TIprint 4dL system.

The following version of Fiery XF is required:

- Fiery XF Server (v. 8.0 and higher)
For more information, contact Fiery XF technical support.

Supported device

Printer model	Description
W+D Winkler+Dünnebier TIprint 4dL	One pass printer for envelopes – option for W+D inserters (BB700, BB820) Color configuration: CMYK Print heads / ink system: Memjet DuraLink

License

You require a license for the Printer Option Group 6.

Setting up the printer in Fiery XF

Set up the export path in Server Manager to generate the BMP files which you can load into the Tlprint System.

You can configure a network path (starting with “\\”). In this case you need to specify Username and Password.

NEW PRINTER

Connection type
File output

Export path
C:\ProgramData\EFI\FI XF\Server\Export\Tlprint Choose...

Username

Password

Naming
%order_%job_%jobid_%t_%p_%date ⓘ
Example: 001_FileName_1_T1_P1_20230510144432

< Back Finish Cancel

Tlprint output file naming

The W+D Tlprint system accepts a set of BMP separation files, one for each ink.

The job submission protocol has special requirements for the file names. A correctly formatted separation file name consists of four parts:

Part	Requirement	
Filename	12 characters (not less, not more) Each character is one of [0123456789ABCDEFGHIJKLMNOPQRSTUVWXYZ]	
Page suffix	Header	“ _H”
	Footer	“ _F”
	Single page	“” (empty, omitted)
	Multipage	“ _ ” followed by 4 digits page number. Example: “ _0001”
Separation suffix	One of { “ C” “ M” “ Y” ”K” } defining the color	
File type suffix	“.bmp”	

A correctly formed job consists of header, footer and

- Single page: One page without page suffix
- Multipage: Pages with page suffix starting with “ _0001”.

The Fiery XF driver offers naming patterns to support the Tlprint naming requirements:

The screenshot shows the Fiery XF driver interface. On the left, the 'CONNECTION' panel is visible, showing 'File output' as the connection type and an export path. Below this, the 'Naming' section shows a dropdown menu with the pattern '%jobid_%count_%job' and an example '0_100_FileName'. A tooltip lists the variables: %count=counter, %jobid=ID, %job=job/nesting name, %t=tile number, %p=page number, %out=printer, %cm=color mode, %res=resolution, %work=workflow, %date=date, %order=order.

On the right, the 'PRINTER' settings panel is shown, with the 'ADVANCED SETTINGS' dialog box open. The 'Naming' field in the dialog is set to '%jobid_%count_%job', and the 'Example' field shows '151_100_ICColor_de'. The 'Advanced Settings' dialog also shows options for 'Simulate final run characteristics', 'Show missing dots up to', 'Define first printable dot up to', 'Add noise up to', 'Dynamic smoothing', and 'Separations'.

Here are some pattern examples for the Naming field:

Naming	Explanation
%job	<p>Only the original file name.</p> <p>Use for production.</p> <p>Filtering: Small letters are converted to uppercase. Other characters are accepted according to the rules above.</p> <p>The length of the file name is kept to the rules above, by truncating or filling with "0"</p> <p>The submitting application is responsible for the job naming. Longer original file names lose their uniqueness – output of other job may be overwritten.</p>
XF%jobid_%count_%job XF%date_%job	<p>Decorated with prefix and counter or date</p> <p>Use when you create a profile.</p> <p>The prefix distinguishes it from production jobs.</p> <p>The job ID can be seen in job list.</p> <p>%count or %date are helpful if you have to re-process the job.</p>
Manual file name	<p>Use when you manually create custom files.</p> <p>The driver uses the field and applies the filtering.</p> <p>Use this only on job basis, especially for header and footer pages</p>

The filtering can be activated by a checkmark (see below).

Header and footer page are not written.

Multipage input files processing:

- The driver generates page suffixes. "Split multipage PDF into single page jobs" is supported. Please don't use the page pattern "%p" for such jobs.
- Multipage processing is not optimized for production performance. The targeted production environment does not submit such files.

Special settings

The driver has a group with two checkmarks:

Tlprint output file

- Filter file name
- Allow overwrite

- **Filter file name** activates the name filtering.
- **Allow overwrite** enables overwriting existing output files.

Workflow settings

Following settings should be considered for production environment:

File tab

PS/EPS/PDF

Stop job processing if font is missing

Ignore transparency blending color space from file

Divide multi-page PDF files into single-page jobs

Size definition

Media box

In-RIP separation

Enable

Divide multi-page PDF files into single-page jobs is interesting if the submitting application sends multipage jobs.

In-RIP separation affects processing speed.

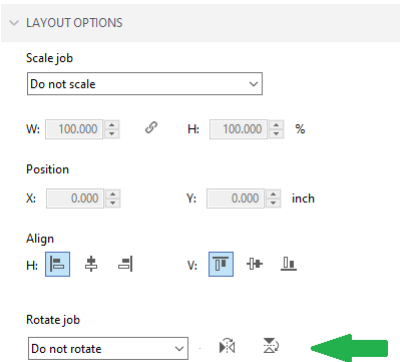
RIP RESOLUTION

RIP resolution

High quality Standard Fast

RIP resolution can be made lower than the print resolution.

Layout tab



The default setting of **Minimal media consumption** rotates jobs if they are higher than wide. **Do not rotate** prevents any rotation.



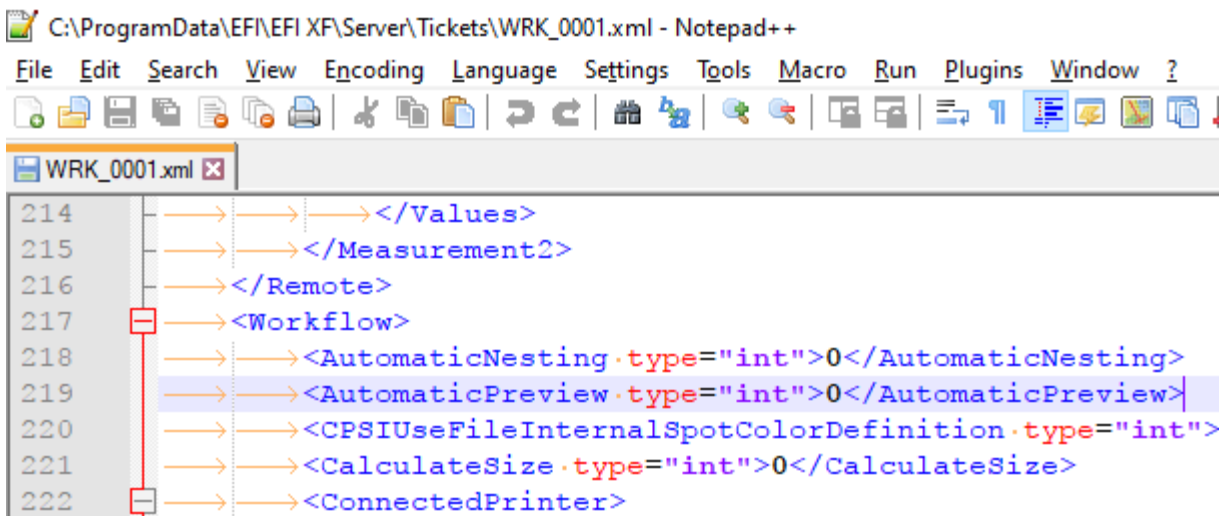
You may want to disable this.

Ticket setting

Preview processing takes noticeable time, especially for smaller jobs.

Workflow/AutomaticPreview can be set to 0 to disable preview. Linearization jobs may fail in that case.

You can use a text editor while the server is down. Be careful with the XML syntax.



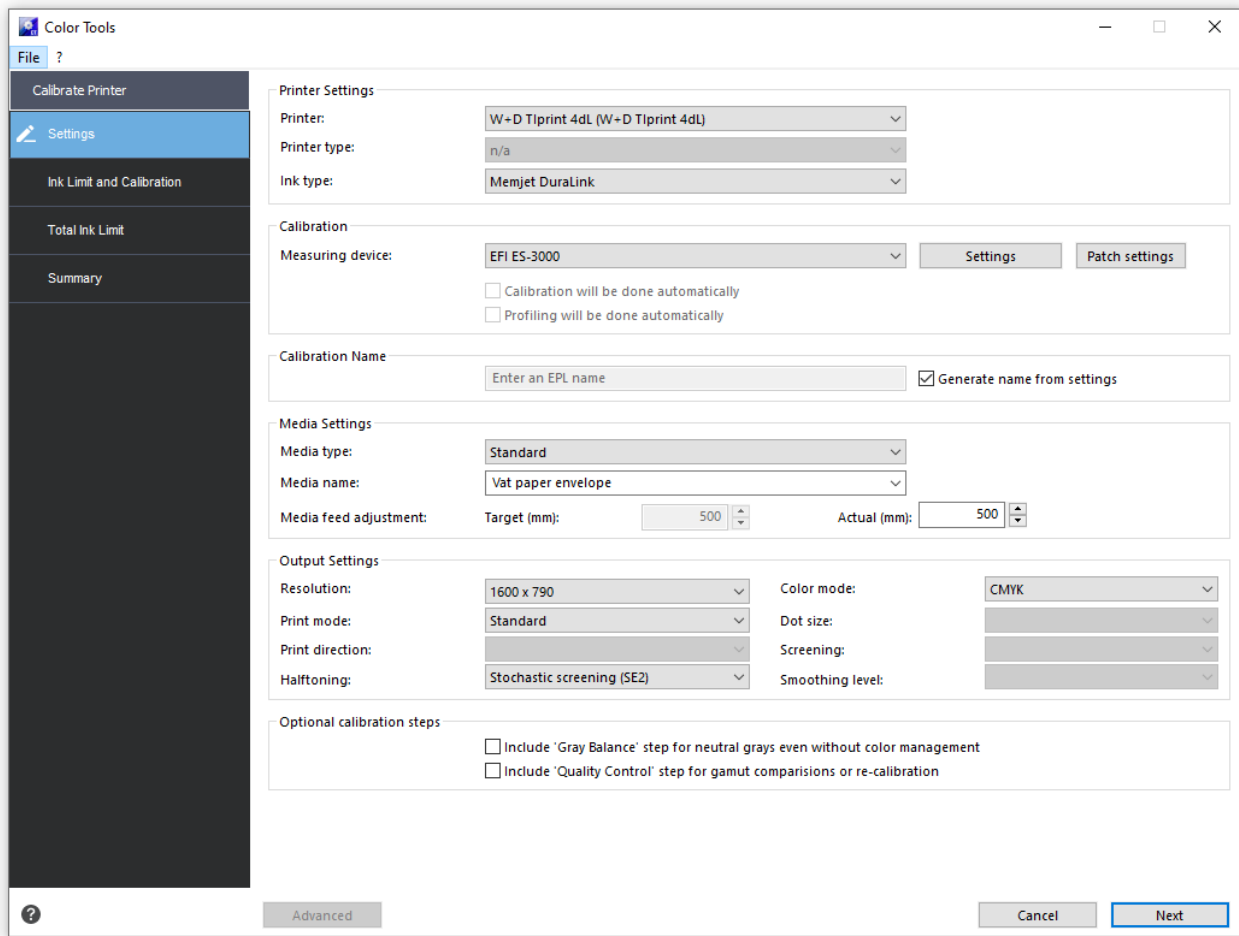
Creating calibration files and media profiles

This section provides information on specific settings that are necessary when creating a calibration file in Color Tools. The calibration file defines the print conditions for the media profile. No special license is required to create a calibration file. The Color Profiler option license is required to create custom media profiles.

Notes:

- Linearization and profiling jobs come from Color Tools and Color Profiler Suite, not from the production system.
 - Set a naming pattern that avoids name conflicts, e.g. “XF%jobid_%count_%job”
 - Charts can be multipage.
 - The driver does not write header and footer.
 - The driver does NOT submit the 34 character command to the TIprint system.
- The chart size is limited by the envelope size.
- You may need to move the chart.
- You may want to insert blank sheets into the envelopes for color consistency.

Settings



Resolutions:

- Horizontal resolution is always 1600dpi
- Vertical resolutions are 580, 720, 790, 925, 1260, 1585. Default is 790.

Halftoning modes are SE2 (default) and SE1.

It is possible to override these two settings on the special tab.