



VUTEk 3r/5r

This document describes the specifics of the VUTEk 3r/5r printer driver. The driver supports the following printer models:

- VUTEk 3r
- VUTEk 5r

Each printer model supports four colors using CMYK and eight colors using light inks CMYKcmk (There is no light yellow. Instead, the yellow channel is duplicated.)

Installation

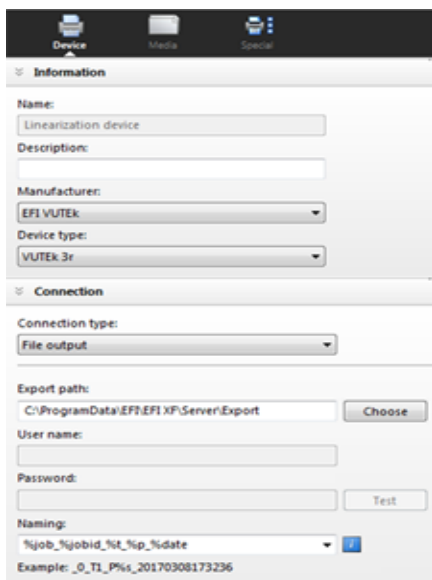
Install Fiery XF 6.5.2 or later. The Fiery XF drivers are available only for the Windows server.

Printer driver

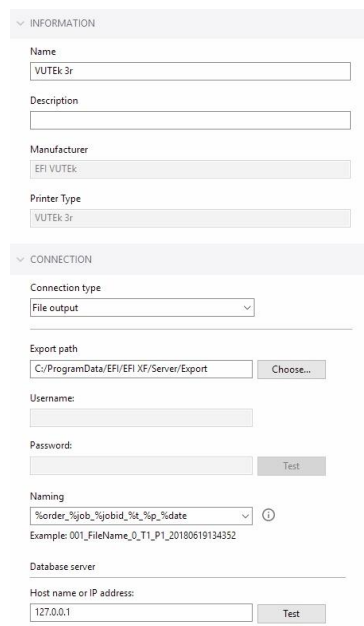
Configuration

The VUTEk 3r/5r printer driver is a file output device. The output files are created in the configured Export folder. The Export folder may be a local folder on the machine or a network shared folder on a remote machine.

Fiery XF 6.x



Fiery XF 7.x



Connecting to a shared folder on the network

To connect to a remote shared folder using the UNC (Universal Naming Convention) you must enter your user credentials (user name and password). You also require write permissions to the remote folder. If necessary, you can add a domain to the user name, using the format <domain>\<username>. The password may be optional for user accounts that do not require it on the remote machine. You can verify the connection to the remote folder by clicking the Test button.

The VUTEk 3r/5r FE (Front End) machine may have a shared network folder that you can specify in Fiery XF for direct output.

Connecting to a local folder

Specifying a local folder can be done manually through an LFS (Local File System) path or by browsing to the location using the Choose button. You do not need to enter your user credentials to connect to a local folder.

Output

The VUTEk 3r/5r printer driver generates separated one-bit TIFF files. Each printed job creates its own subfolder based on the chosen naming format: <job-name>.&b>mjob. The following output files are created:

File type	Name template
One-bit TIFF separations	< job-name >▲C.tif < job-name >▲M.tif < job-name >▲Y.tif < job-name >▲K.tif Additional light ink files for 8 separation modes: < job-name >▲LC.tif < job-name >▲LM.tif < job-name >▲LY.tif < job-name >▲LK.tif Additional special inks files (White/Clear): < job-name >▲W.tif < job-name >▲V.tif
Preview image	< job-name >▲PRV.bmp
Job ticket	< job-name >.xml

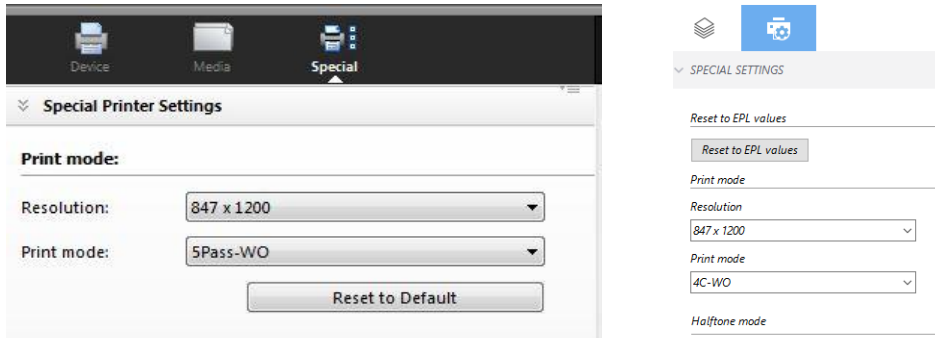
▲ = Space character

The job ticket xml contains job-specific information for the VUTEk 3r/5r printer, including the printer mode to be used and layout options.

Special printer settings

Print modes

You can override the resolution and print mode saved to the selected media profile by using the print mode options on the Special Printer Settings pane:

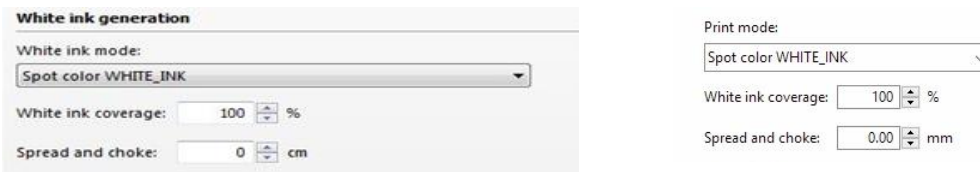


Only resolutions and print modes which are compatible with the color mode of the media profile are available for selection. For example, if the media profile was created for CMYKcmyk, only the resolutions and print modes applicable for this color mode are displayed. The Halftone mode should always be set to “Use halftoning from EPL”.

Clicking the “Reset to EPL values” button will reset the resolution and print mode to the values saved in the media profile.

White Inks

All VUTEk 3r/5r printer models support White ink. However, be aware that the White ink is optional, depending on the configuration of the physical device.



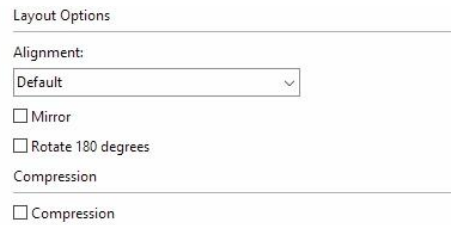
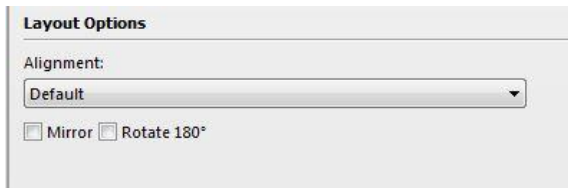
You can generate White ink either by mapping a spot color (if one exists in the input job) or by using one of the available options: Bounding Box (Flood), Inked Image or Inked Image Inverse.

Important: Not all print modes create White/Clear ink TIFF separations, even if the White/Clear ink option is set up in Fiery XF to generate it either from a spot color or another option. This is because only the White/Clear print modes accept these separations on the VUTEk 3r/5r FE side.

For example: If you use the 4C-5Pass print mode, no white separation will be created, because it is a non-white print mode. However, if you switch to the 4C-WO print mode, a white separated TIFF will be produced in the job folder.

Layout options

The following layout options are available in Fiery XF:



Setting	Description
Alignment	Aligns the job horizontally on the media
Mirror	Mirrors the job horizontally
Rotate 180°	Rotates the job by 180 degrees

These options are set inside the job ticket xml of the job, and are reflected on the VUTEk 3r/5r FE user interface. If you change the setting on the VUTEk 3r/5r FE user interface, it overrides the equivalent setting from the job ticket xml.

Note: The layout options provided on the Special Printer Settings pane are different from the generic ones available on the Layout pane of the Fiery XF client, and their behavior is different. While the generic layout options are performed by the RIP, the settings on the Special Printer Settings pane are applied by the VUTEk 3r/5r printer at the time of printing.

Available print modes

The following print modes are available in Fiery XF 6.5.2 and Fiery XF 7.0.x. Additional custom print modes may be available. Contact inkjet support to inquire about additional print modes.

Print Mode Name	X-Res	Y-res	Drop size, pl	Prints White?	Comments
4C-1Pass	317.5	600	14	No	
4C-2Pass	635	1200	7	No	
4C-2Pass-HR	846.7	1200	7	No	
4C-3Pass	635	1200	7	No	
4C-3Pass-HR	846.7	1200	7	No	
4C-4Pass	635	1200	7	No	
4C-5Pass	635	1200	7	No	
4C-5Pass-HR	846.7	1200	7	No	
4C-6Pass	635	1200	7	No	

Print Mode Name	X-Res	Y-res	Drop size, pl	Prints White?	Comments
4C-8Pass-DS	635	1200	7	No	
4C-8Pass-DS-HR	846.7	1200	7	No	
4C-9Pass	635	1200	7	No	
4C-16Pass-DS	635	1200	7	No	
7C-8Pass	635	1200	7	No	
7C-8Pass-HR	846.7	1200	7	No	
4C-WO	846.7	1200	7	Yes	
4C-WU	1016	1200	7	Yes	
7C-WO	846.7	1200	7	Yes	
7C-WU	846.7	1200	7	Yes	
4C-WO-DSW	846.7	1200	7	Yes	
4C-WU-DSW	846.7	1200	7	Yes	
4C-CWC	846.7	1200	7	Yes	
7C-CWC	846.7	1200	7	Yes	
4C-5Pass-8S	635	1200	7	No	Fiery XF 7.0.5 and later
4C-W	846.7	1200	7	No	Fiery XF 7.0.5 and later

The print modes below must be printed using the 5-Color option in the printer Front End software:

Print Mode Name	X-Res	Y-res	Drop size, pl	Prints White?
4C-CWC-C1	846.7	1200	7	Yes
4C-CWC-C2	846.7	1200	7	Yes
7C-CWC-C1	846.7	1200	7	Yes
7C-CWC-C2	846.7	1200	7	Yes
4C-CWC-B-C1	846.7	1200	7	Yes
4C-CWC-B-C2	846.7	1200	7	Yes

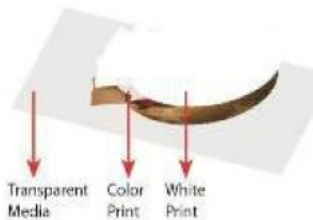
Print Mode Name	X-Res	Y-res	Drop size, pl	Prints White?
7C-CWC-B-C1	846.7	1200	7	Yes
7C-CWC-B-C2	846.7	1200	7	Yes
4C-CWBWC-C1	725.7	1200	7	Yes
4C-CWBWC-C2	725.7	1200	7	Yes
7C-CWBWC-C1	725.7	1200	7	Yes
7C-CWBWC-C2	725.7	1200	7	Yes

Print Modes that do not use White

A variety of print modes are available that do not print white. Most of these are 4-color print modes with differing number of passes. Additionally, some print modes will print higher resolution (HR) in the X-direction or will print double-strike (DS). Print quality generally increases with more passes but print speed is reduced.

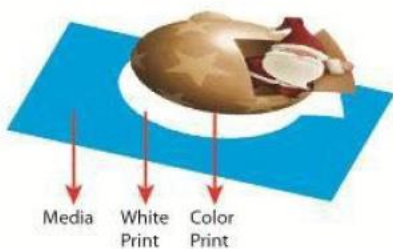
White Over Color (WO)

These print modes are generally used to print second surface on clear media. The color is laid down first and the white over the color layer. The white layer should be generated in Fiery XF using any of the available white ink options. A single file is RIPed and printed using the front-end software.



White Under Color (WU)

These print modes are generally used to print first surface on clear media. White is laid down first and the color over the white layer. The white layer should be generated in Fiery XF using any of the available white ink options. A single file is RIPed and printed using the front-end software.



Printing White only on non-White substrates

You can print white only using either the WO or WU print mode by having a source file that specifies white ink and has no color content.



Backlit Color-White-Color (CWC or CWC-C1 and CWC-C2)

These print modes are used to print backlit jobs on clear media. When using a CWC print mode, for example, 4C-WWC the same color image is printed on the front and back. To use different images on the front and back you will need to RIP the front and back jobs separately using, for example, 4C-CWC-C1 for the front image and 4C-CWC-C2 for the back image.

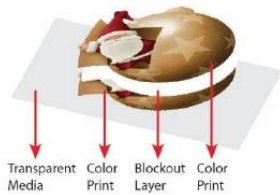


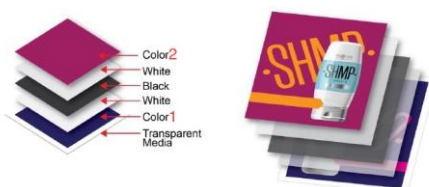
Figure 7-17

To print jobs with different front and back images you must use the 5-Layers option in the printer front end software and select both images.



5-Layer

Use this print mode to print a 5-layer image with different front and back images with a black block-out layer in between. To use different images on the front and back you will need to RIP the front and back jobs separately using, for example, 4C-CWC-B-C1 for the front image and 4C-CWC-B-C2 for the back image. To print jobs with different front and back images you must use the 5-color option in the printer front-end software.



Old print modes that are still supported

The following older print modes are supported in Fiery XF 6.5.2 and Fiery XF 7.0 but you can no longer create new calibrations using these print modes:

Print Mode Name	X-Res	Y-res	Drop size, pl	Prints White?
1PassFine	317.5	600	28	No
2PassFine	635	1200	7	No
3PassFine	635	1200	7	No
5Pass	635	1200	7	No
5PassSmooth	635	1200	7	No
5PassSmoothDS	635	1200	7	No
8Pass-8C	635	1200	7	No
2PassFineHR	846.7	1200	7	No
3PassFineHR	846.7	1200	7	No
5PassFine	846.7	1200	7	No
5Pass-WO	846.7	1200	7	Yes
8PassFine-8C	846.7	1200	7	No
10Pass-CWC	846.7	1200	7	Yes
10Pass-CWC-8C	846.7	1200	7	Yes
10Pass-C1WC2-WO	846.7	1200	7	Yes
10Pass-C1WC2-WU	846.7	1200	7	Yes
13Pass-CWBWC-WO	846.7	1200	7	Yes
13Pass-CWBWC-WU	846.7	1200	7	Yes
13Pass-CWBWC-8C-WO	846.7	1200	7	Yes
13Pass-CWBWC-8C-WU	846.7	1200	7	Yes
6Pass-WU	1016	1200	7	Yes

Setting up bi-directional communication

Bi-directional communication in Fiery Command WorkStation (Fiery XF 7.0 onwards) enables the VUTEk 3r\5r printer to submit ink details (volume of ink used per color), media details (consumption/wastage) and printing time for each job. The following document describes how to set up the VUTEk 3r\5r printer for bi-directional communication.

<http://help.efi.com/fieryxf/KnowledgeBase/FieryXFWorkflow/SettingUpBi-diCommunication.pdf>