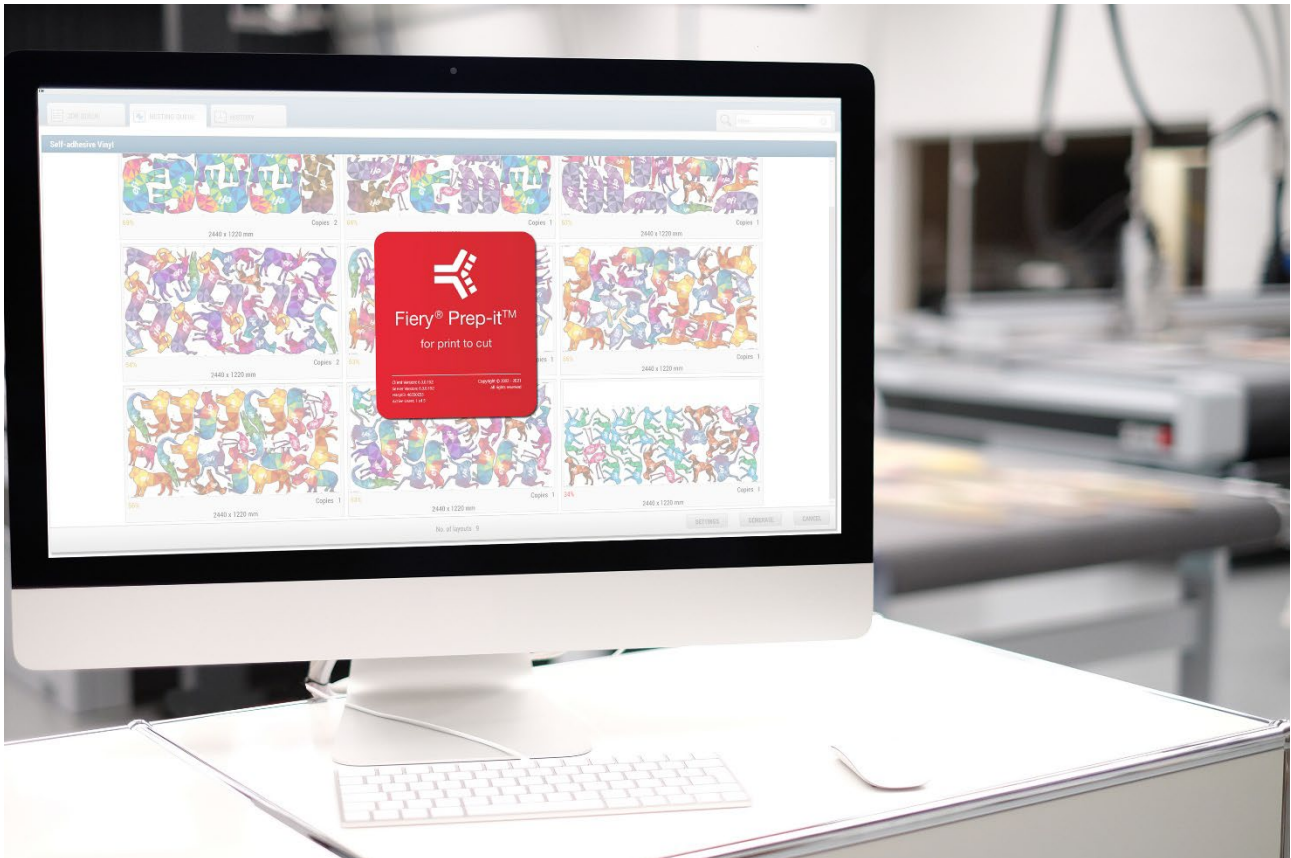


Fiery Prep-it 6.3.2



Installation Guide

Table of Content

1	Installation of Fiery Prep-it Server and Client.....	3
1.1	Operating systems supported.....	3
1.2	Recommended system requirements (minimum).....	3
1.3	Hardware key	3
1.4	Installation of the Fiery Prep-it Server	4
1.5	Installation of the hardware key driver – NEW INSTALLATION ONLY!	7
1.6	Allow communication through firewall	10
1.7	Ready for key activation.....	11
1.8	Configuration of the Fiery Prep-it Server.....	12
1.9	Installation of the Fiery Prep-it Windows client	14
1.10	Configuration of the Fiery Prep-it Windows client	17
1.11	Installation of the Fiery Prep-it MAC client.....	19
1.12	Configuration of the Fiery Prep-it MAC client.....	22

1 Installation of Fiery Prep-it Server and Client

1.1 Operating systems supported

- ✓ Windows 10, 64-bit
- ✓ Windows 11, 64-bit
- ✓ MAC OSX 13 Ventura (Prepress client only)
- ✓ MAC OSX 14 Sonoma (Prepress client only)
- ✓ MAC OSX 15 Sequoia (Prepress client only)

1.2 Recommended system requirements (minimum)

Fiery Prep-it Server (WINDOWS)

Operating system	Windows 11 - 64-bit (also compatible with WIN 10)
Processor	12. gen processor
Ram	16 GB
Hard drive	1TB Samsung NVME m.2 split in 2 partitions boot 200GB 800 GB as storage drive
Network	1 Gbit
Interface	4 x USB port

Fiery Prep-it Client (WINDOWS)

Operating system	Windows 11 - 64-bit (also compatible with WIN 10)
Processor	12. gen processor
Ram	16 GB
Network	1 Gbit
Screen resolution	1920 x 1080

Fiery Prep-it Client (MAC)

Operating system	OS 15 – Sequoia (also compatible down to OS13 Ventura)
Network	1 Gbit
Screen resolution	1920 x 1080

Programs must run on physical hardware – ‘Virtualization’ may not function!

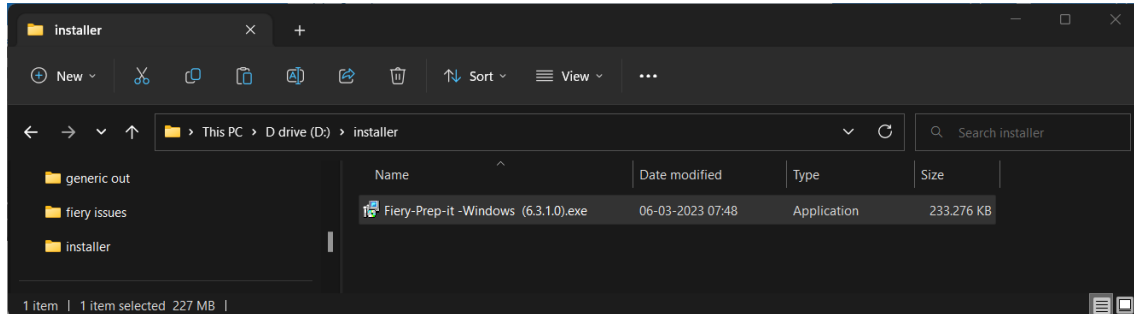
1.3 Hardware key

Plug the hardware key for **Fiery Prep-it Server** into one of the USB ports at the PC.

Note! Dongle might light up even if the appropriate Sentinel HASP driver is not yet installed.

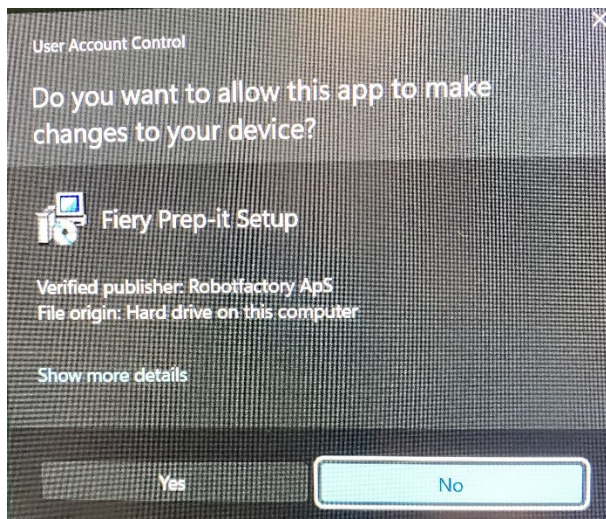
1.4 Installation of the Fiery Prep-it Server

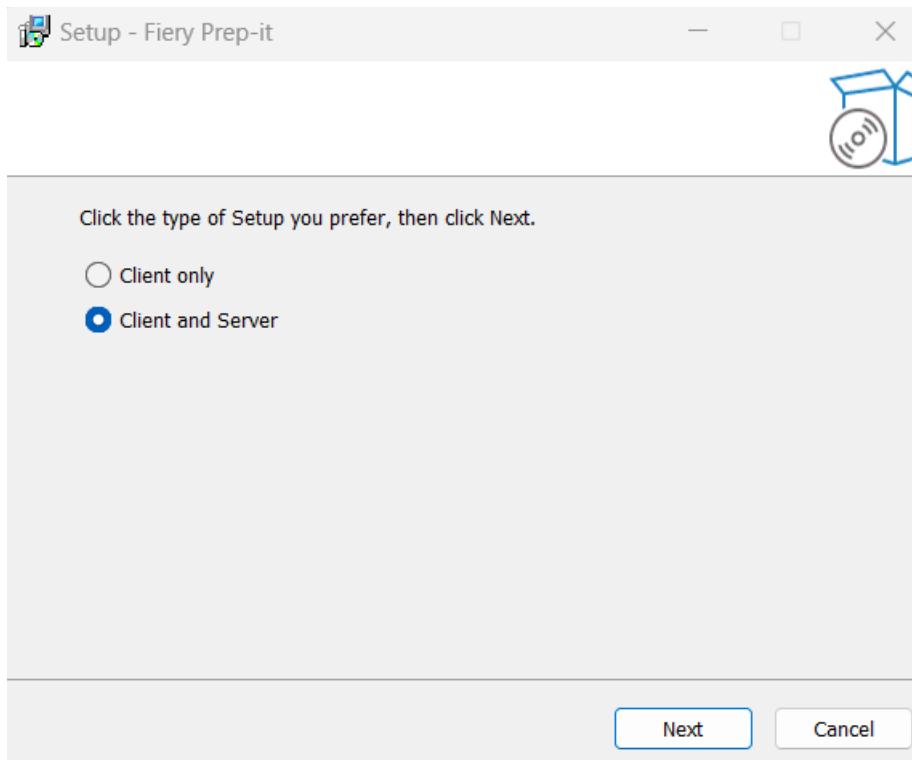
Place the installer program locally to your desired Windows computer



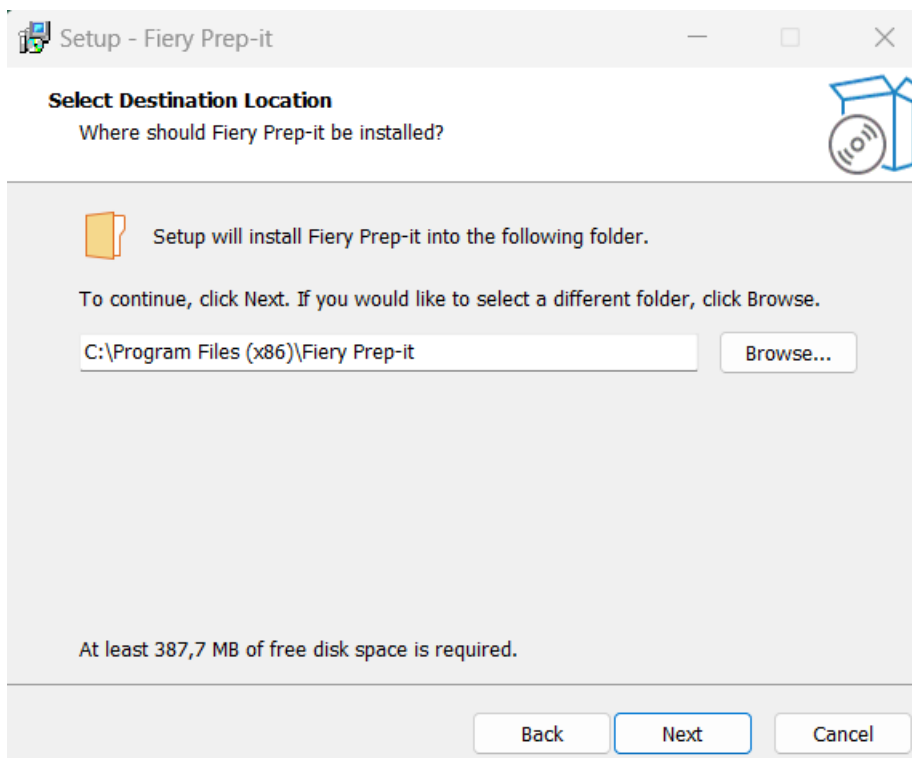
Double-Click at **Fiery Prep-it.exe** program to start the installation wizard.

Depending upon local User Account Control Settings – this warning may appear!
Confirm with **YES** to allow Fiery Prep-it to install.

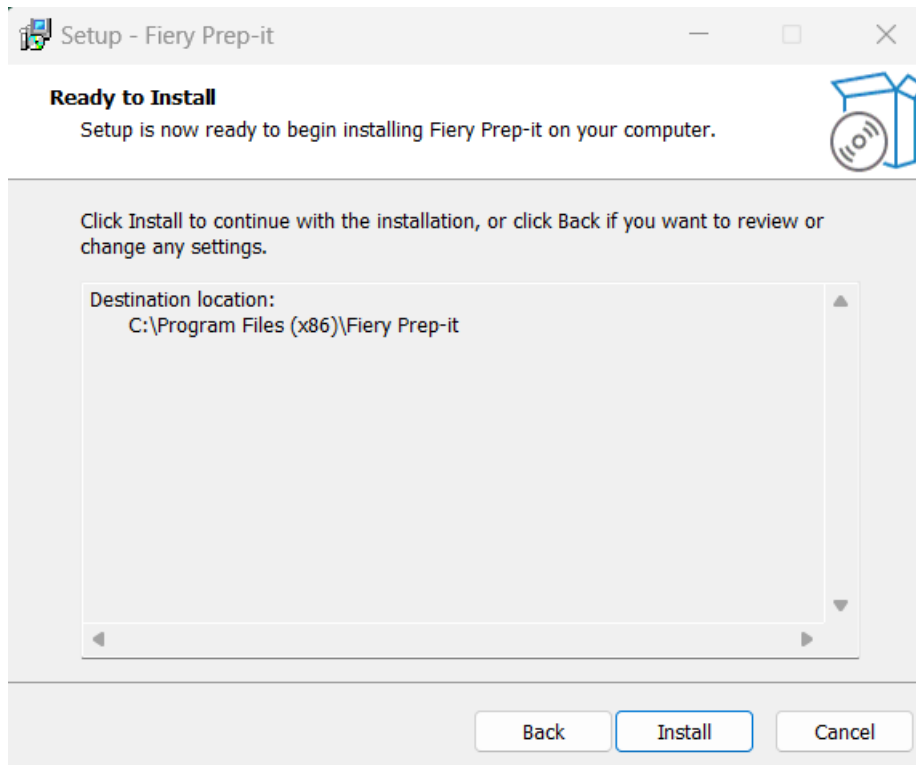




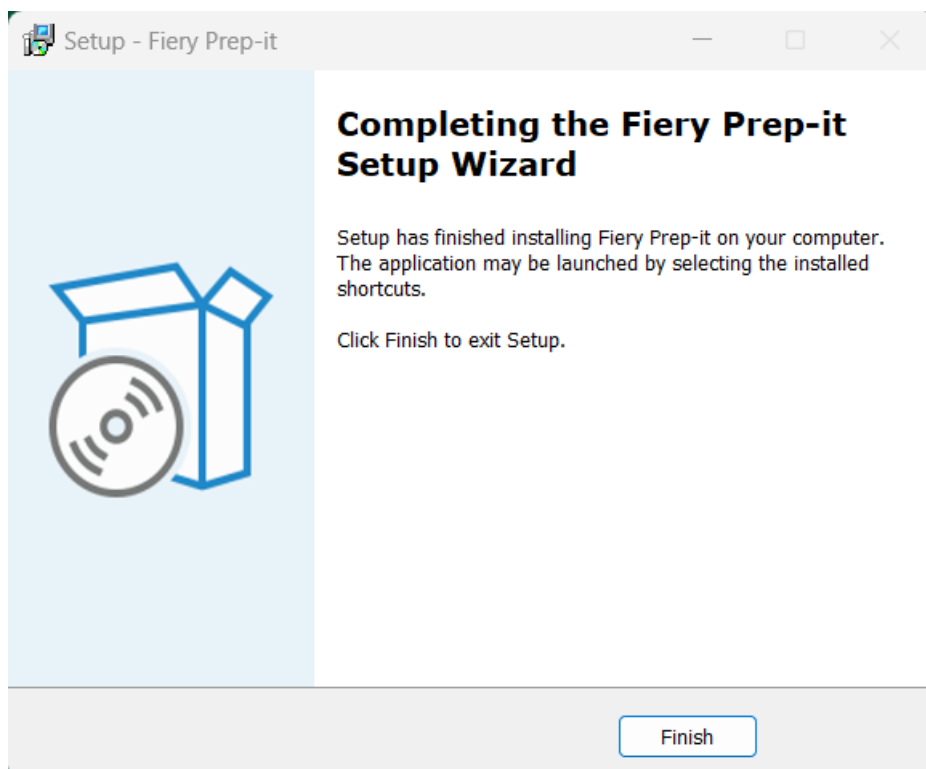
Select **Client and Server** and click **Next** to continue.



Click **Next** to install **Fiery Prep-it** in the suggested directory.



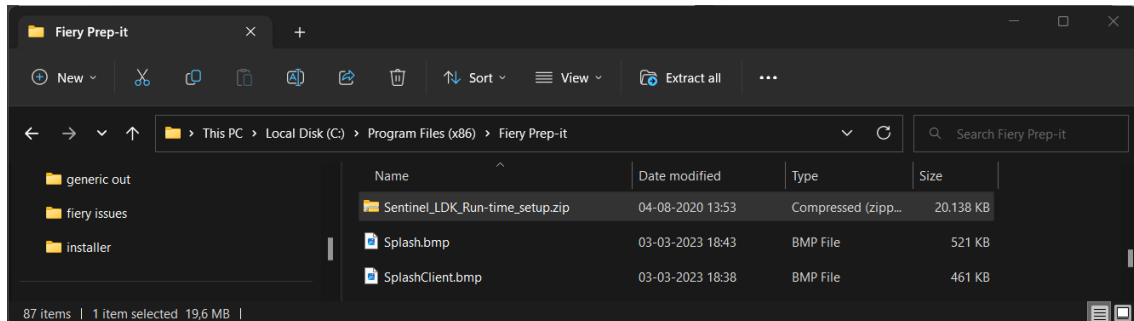
Click **Install** to continue the installation.



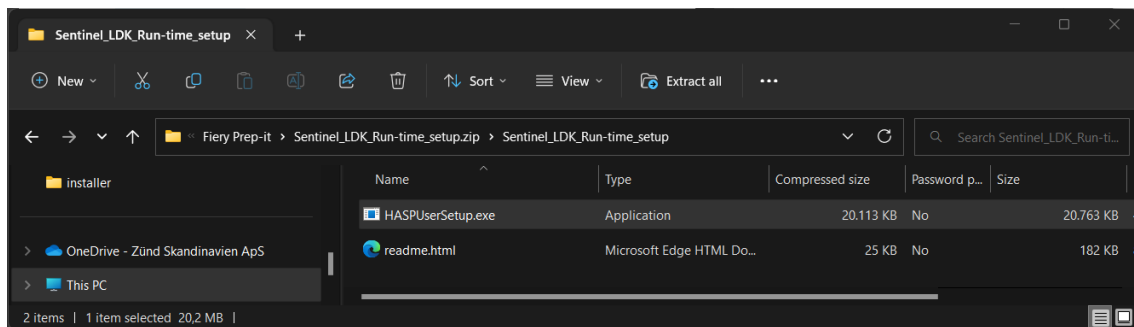
Click **Finish** to exit the installation setup

1.5 Installation of the hardware key driver – NEW INSTALLATION ONLY!

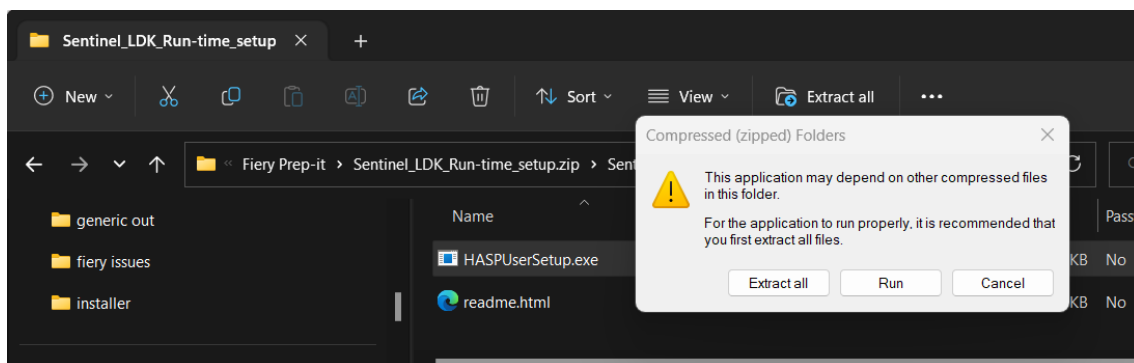
Locate the Sentinel_LDK_Run-time_setup.ZIP file on the install path for Fiery Prep-it on the computer.



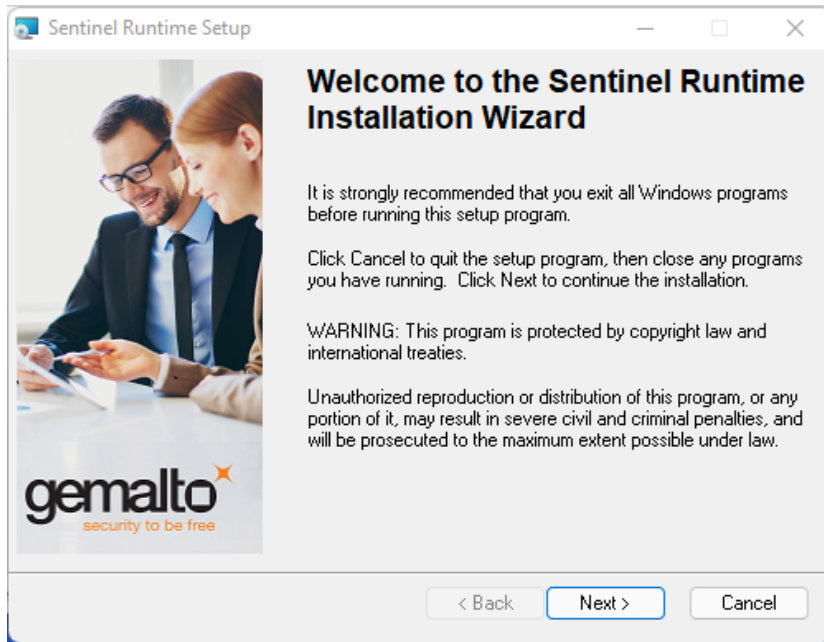
Double-Click at [Sentinel_LDK_Run-time_setup.ZIP](#) to install



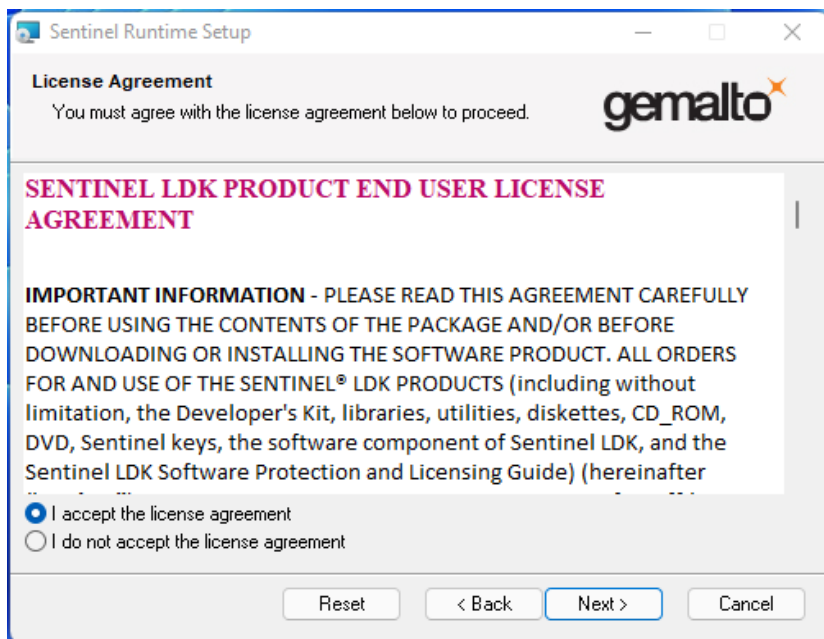
Double-Click at [HASPUserSetup.exe](#) to start the installation of the hardware key driver.



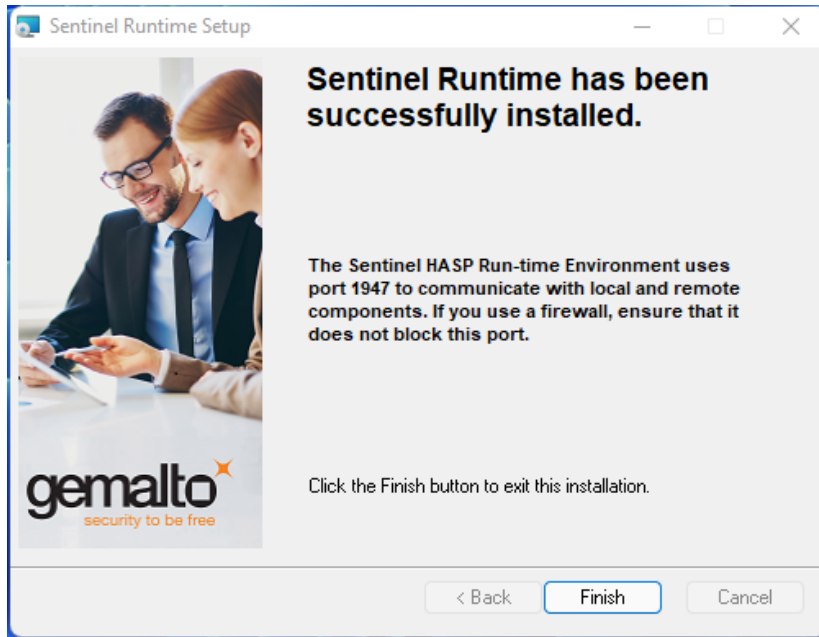
Click [Run](#) to continue



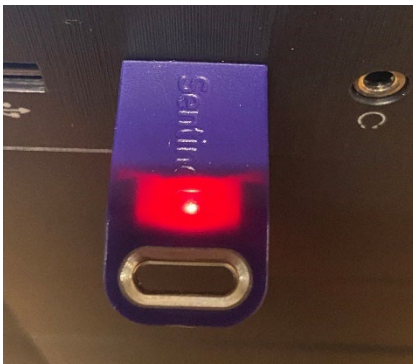
Click **Next** to begin the installation of the driver and **Accept** the license agreement.



The installation of the hardware key driver is finished.



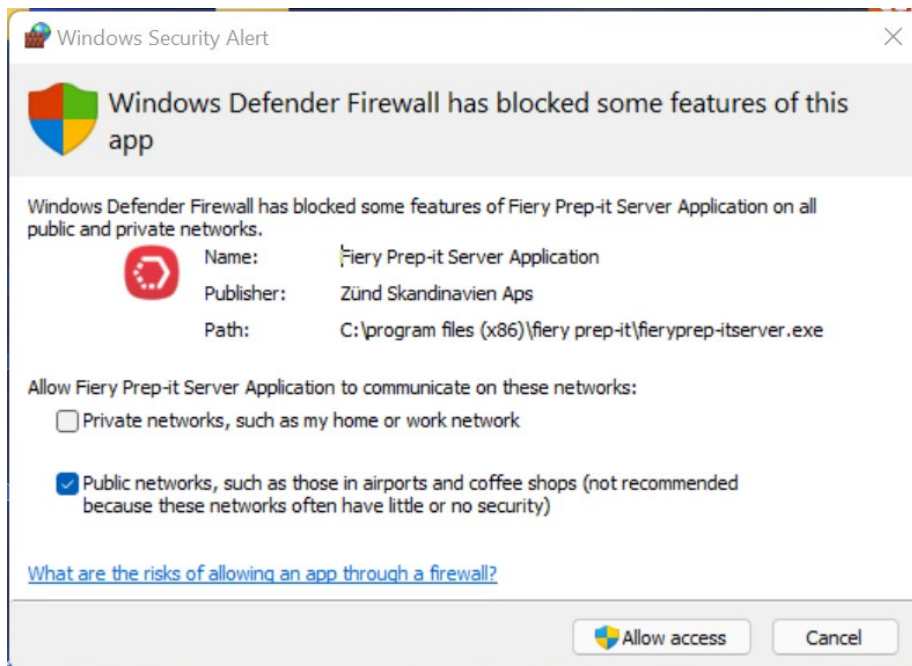
Click **Finish** to exit the installation program and note that the hardware key is now lit up.



Notes

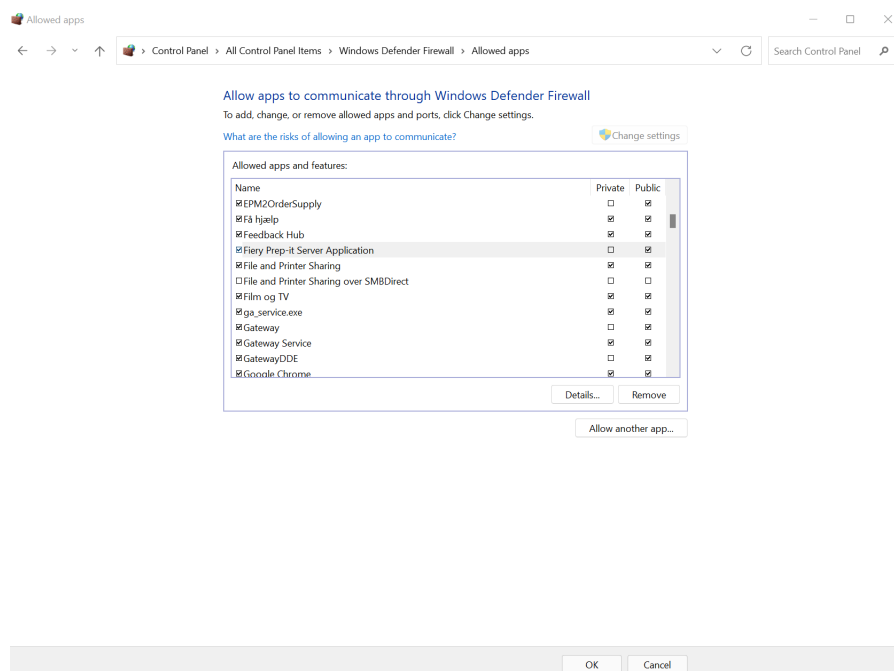
The Installation of Fiery Prep-it Server is now finished.
The server is not running before you are logged in at the PC

1.6 Allow communication through firewall



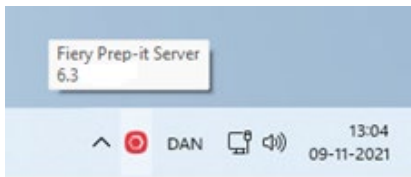
Click **Allow access** in this appearing dialog to enable communication between Fiery Prep-it Server and Clients.

If having trouble with connection between Server and Clients – then check settings in the Windows Control Panel > All Control Panel Items > Windows Defender Firewall > Allowed Apps

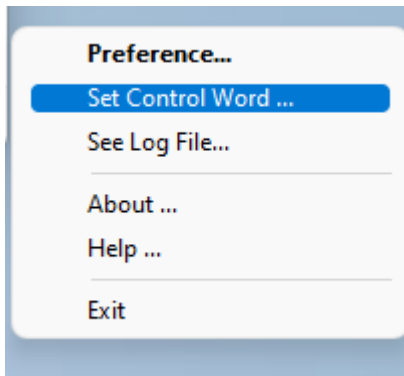


Note! Fiery TCP/IP communication port is 2567.

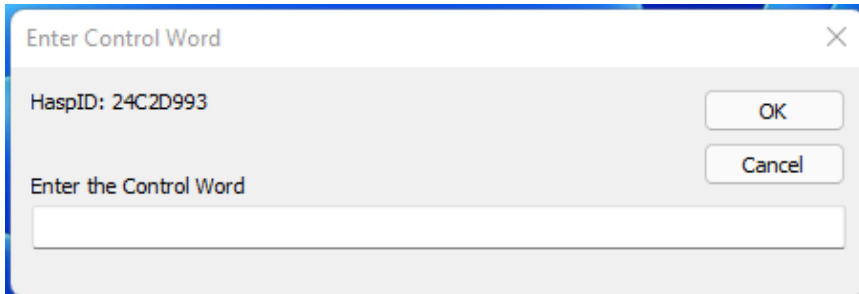
1.7 Ready for key activation



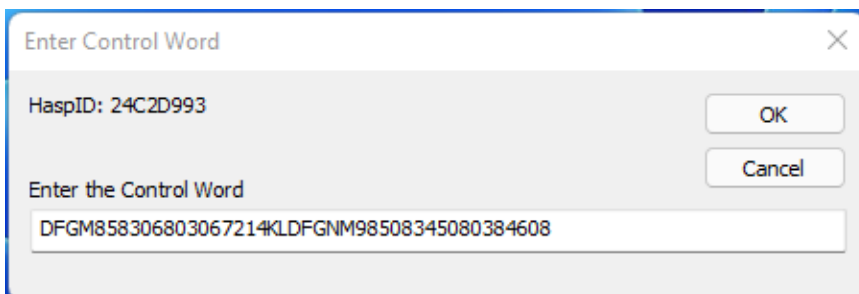
Right-Click at the **Fiery Prep-it Server** icon in the lower right-hand corner



Select **Set Control Word**
The following dialog will appear



Enter the control word received by e-mail to enable **Fiery Prep-it**



Click **OK**

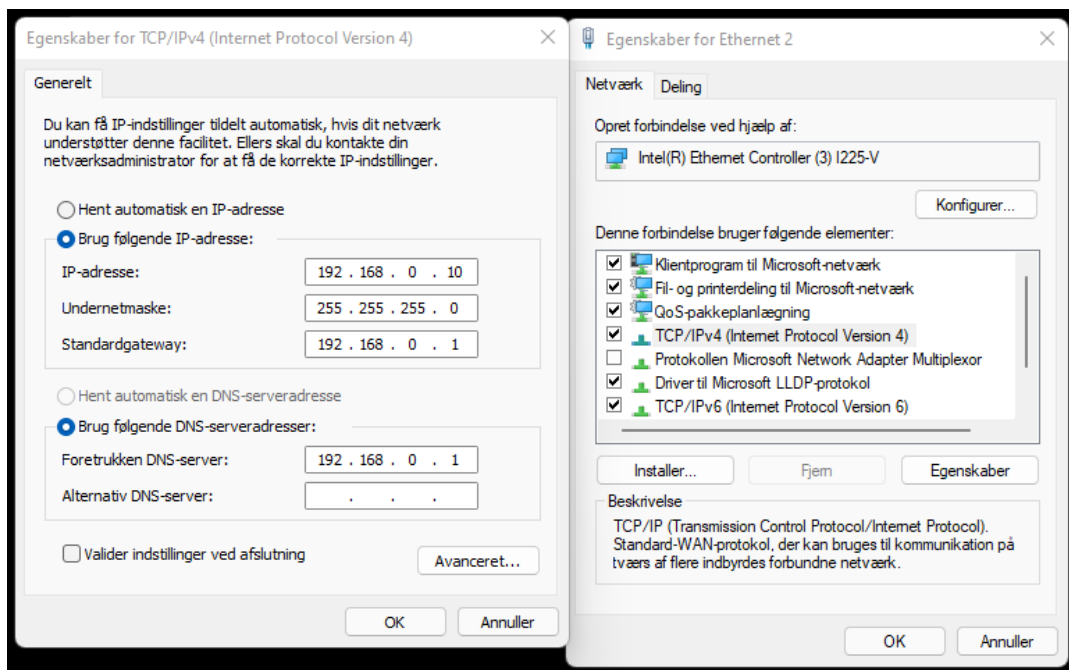
1.8 Configuration of the Fiery Prep-it Server

Right-click on the Fiery Prep-it Server icon and select **About**.



Note the actual TCP/IP address.

To ensure clients always can connect to this server please check the network settings below



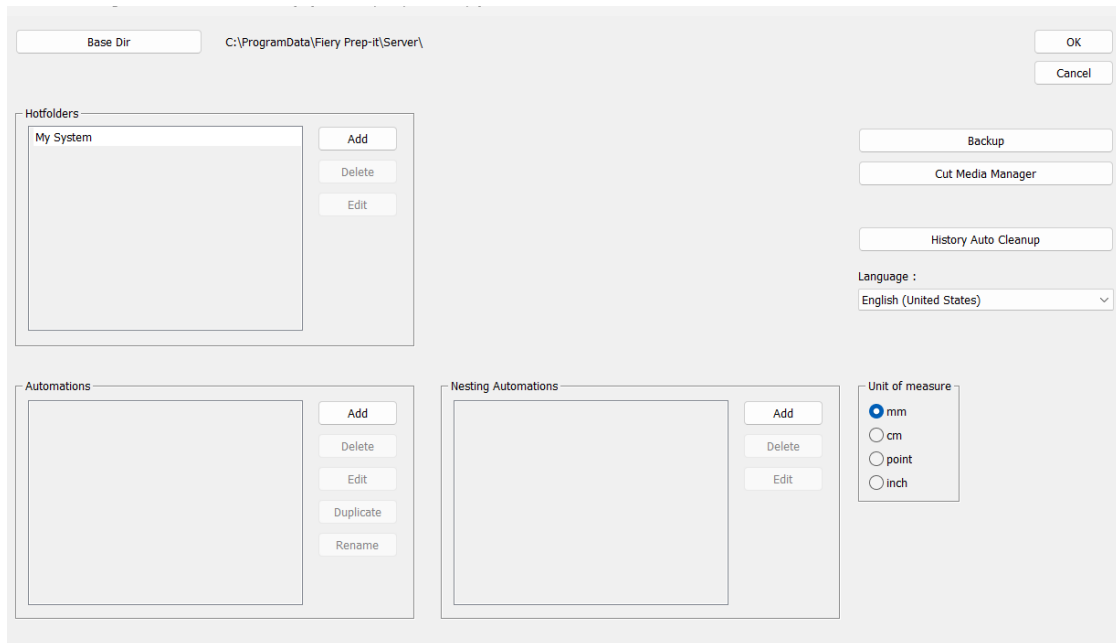
The Server needs a **static IP address**.

Please consult with the IT administrator to obtain a possible address.

Note! Fiery TCP/IP communication port is 2567.

The preference dialog

Right-click on the Fiery Prep-it Server icon and select **Preferences**.



Base Dir - is where the data processed through Fiery Prep-it Server is saved. Make sure the storage area is large enough - minimum 20 GB. To change the storage area requires an empty system.

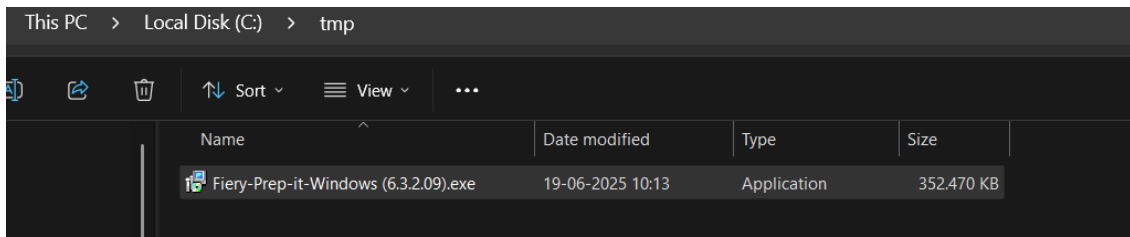
Hotfolders – is used for importing of jobs into Fiery Prep-it. Browse or create new **IN** and **OUT** folders.

Automations – are pre-defined actions created on the server and assigned to a Hotfolder or used from Fiery Prep-it when importing files (File Import – dialog)

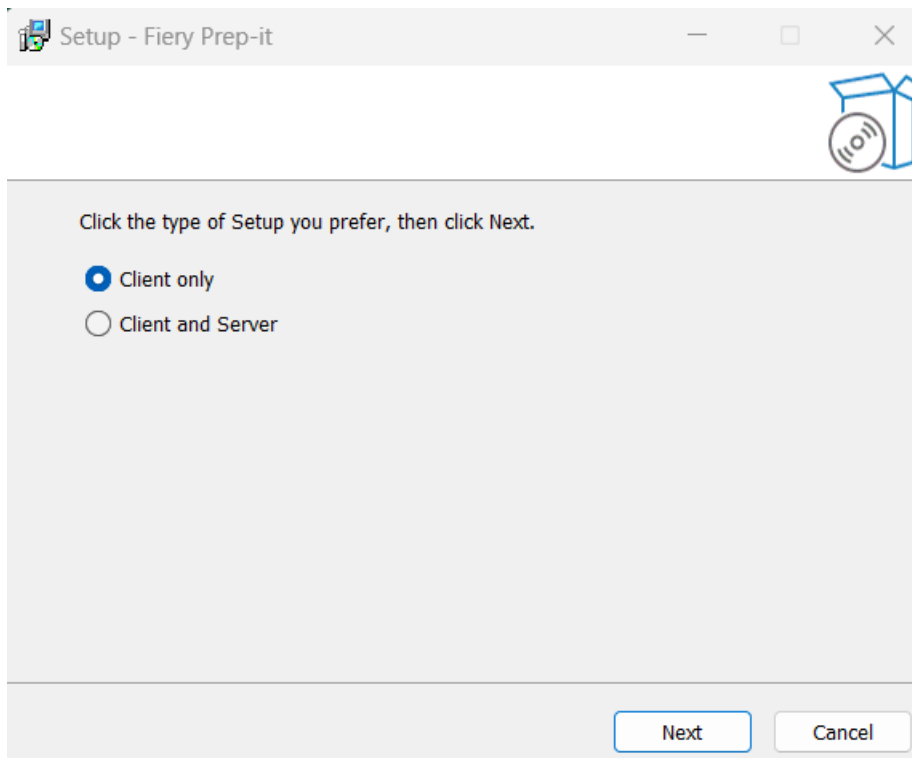
Nesting Automations – is used when setting up auto nesting functionality.

1.9 Installation of the Fiery Prep-it Windows client

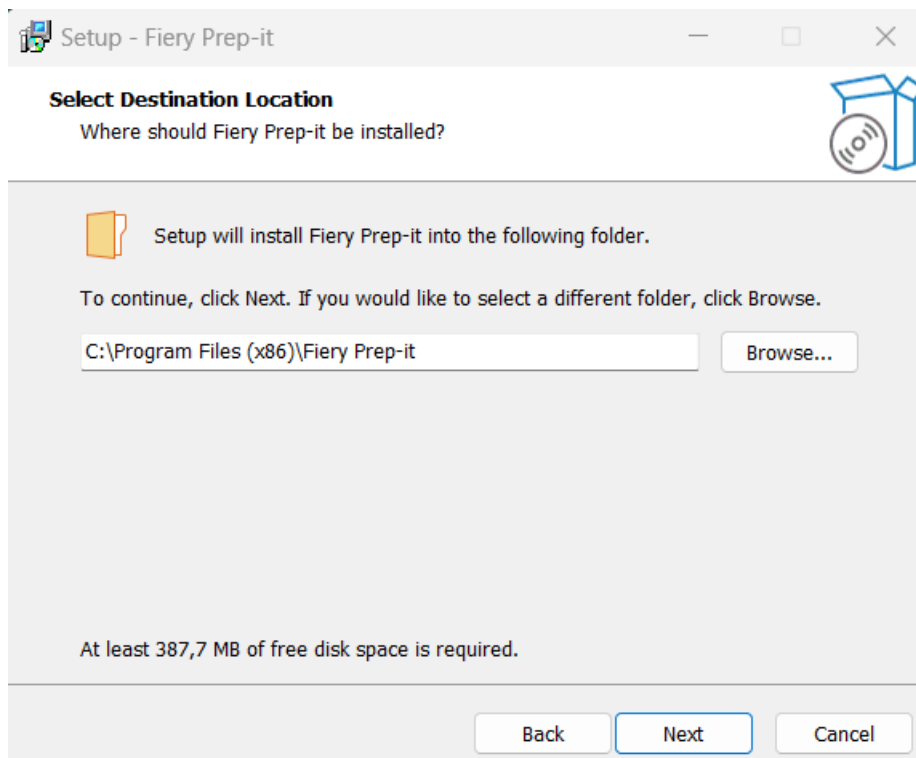
Place the installer program locally to your desired Windows computer



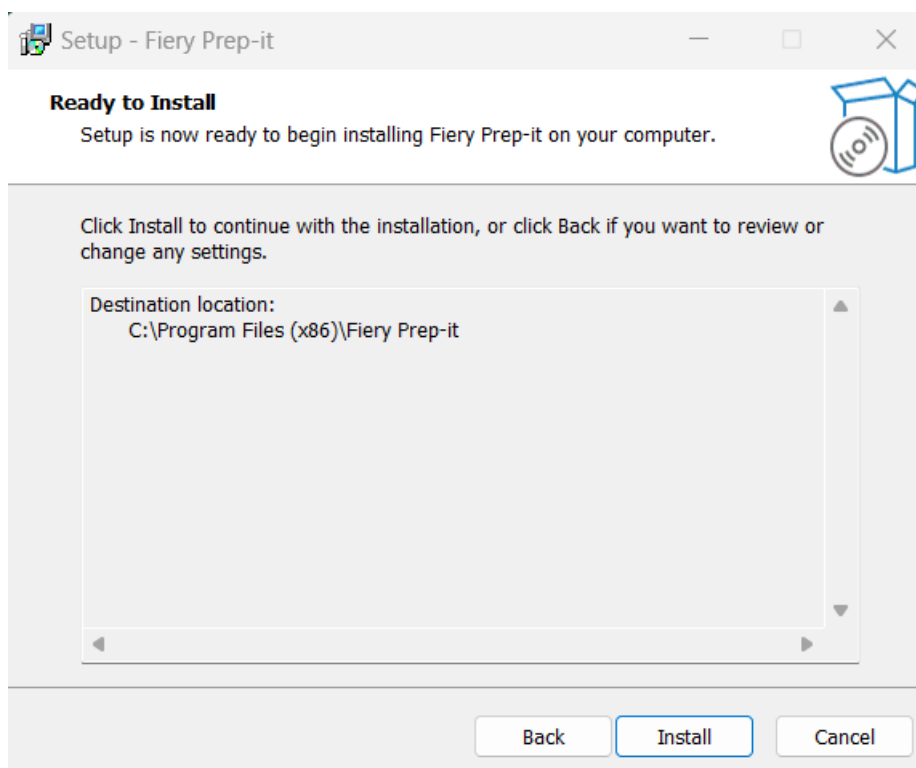
Double-Click at **Fiery Prep-it.exe** program to start the installation wizard.



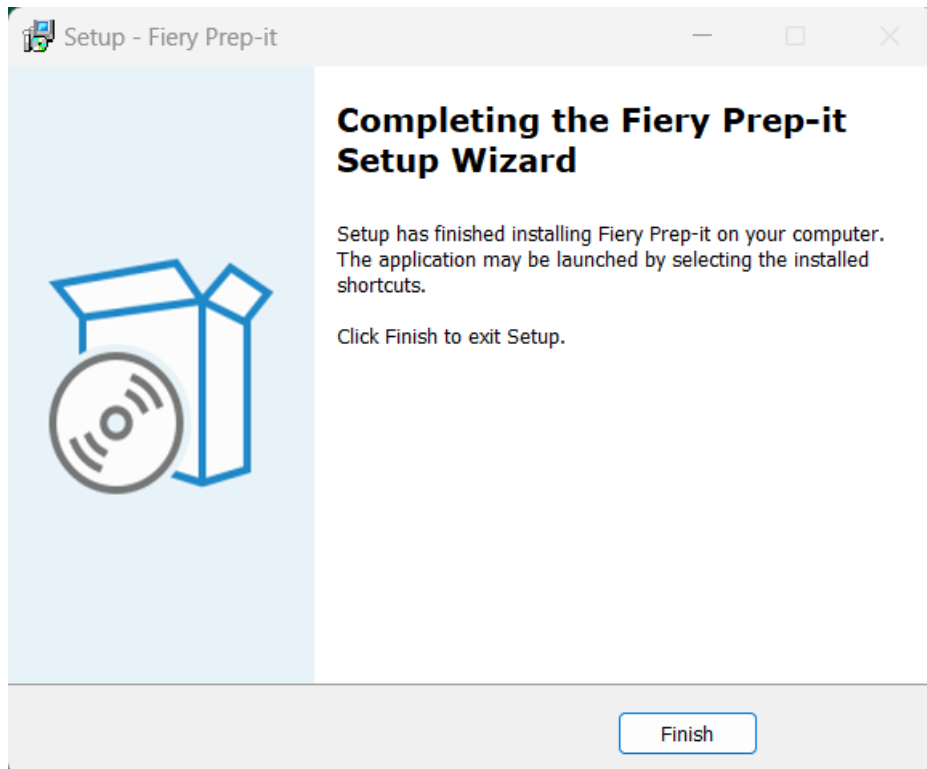
Select **Client** only and click **Next** to continue.



Click **Next** to install **Fiery Prep-it** in the suggested directory.

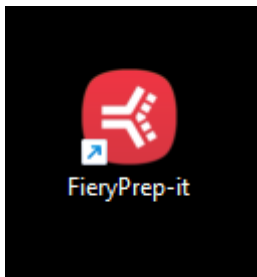


Click **Install** to continue the installation.

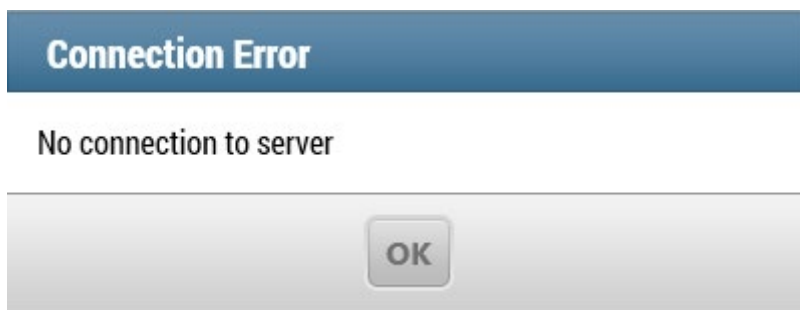


Click **Finish** to finish Client installation.

1.10 Configuration of the Fiery Prep-it Windows client

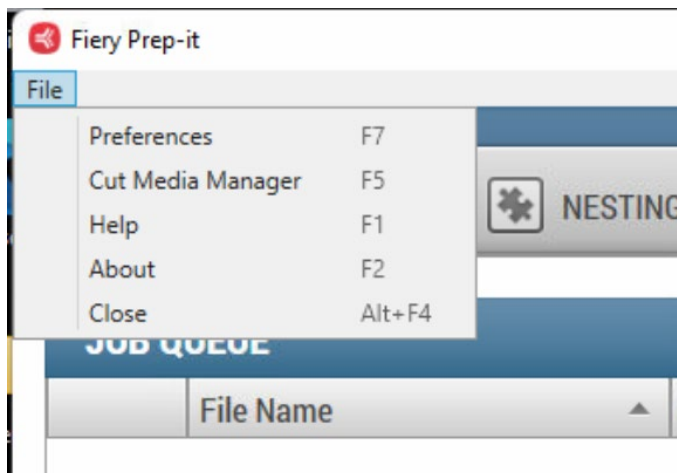


Double-click at the **Fiery Prep-it** icon to start the application



Click **OK** to continue

Click **File** and select **Preferences** from the drop-down menu.



PREFERENCES AND SETTINGS

User name

Server adress

Unit ☒ mm
☐ cm
☐ inch

Language

CANCEL **OK**

Enter the **User name** which will be listed in the Fiery Prep-it Queues.
Write the IP address shown in the Server **About** window.
Select **units** and **language**.

Confirm with **OK** and restart the Fiery Prep-it client to connect to the Fiery Prep-it Server.

Note! Fiery TCP/IP communication port is 2567.

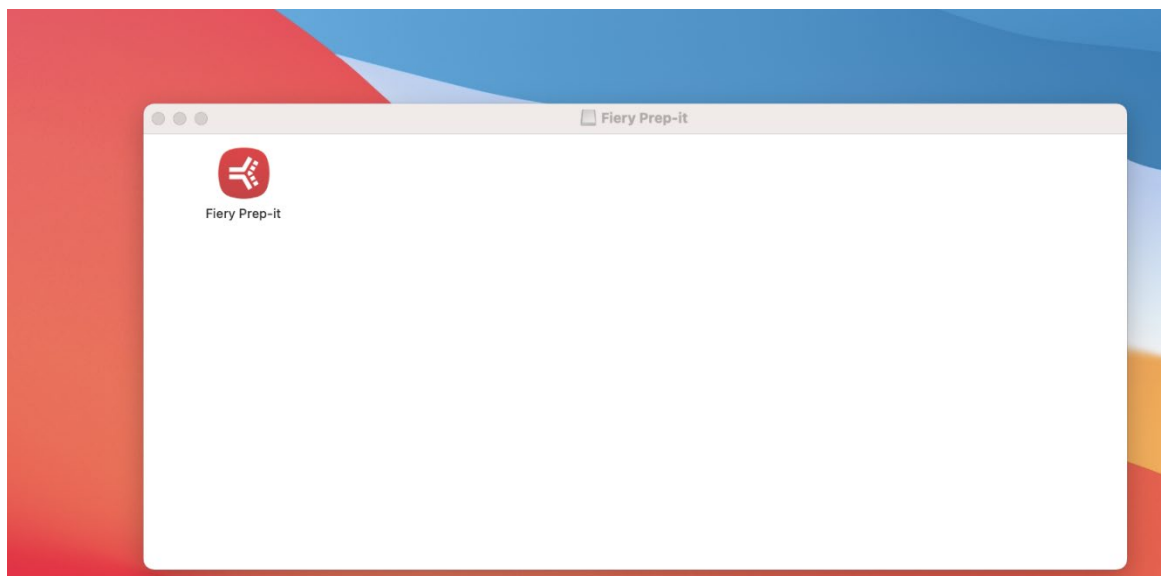
1.11 Installation of the Fiery Prep-it MAC client

Place the installer onto the desktop – double-click to install

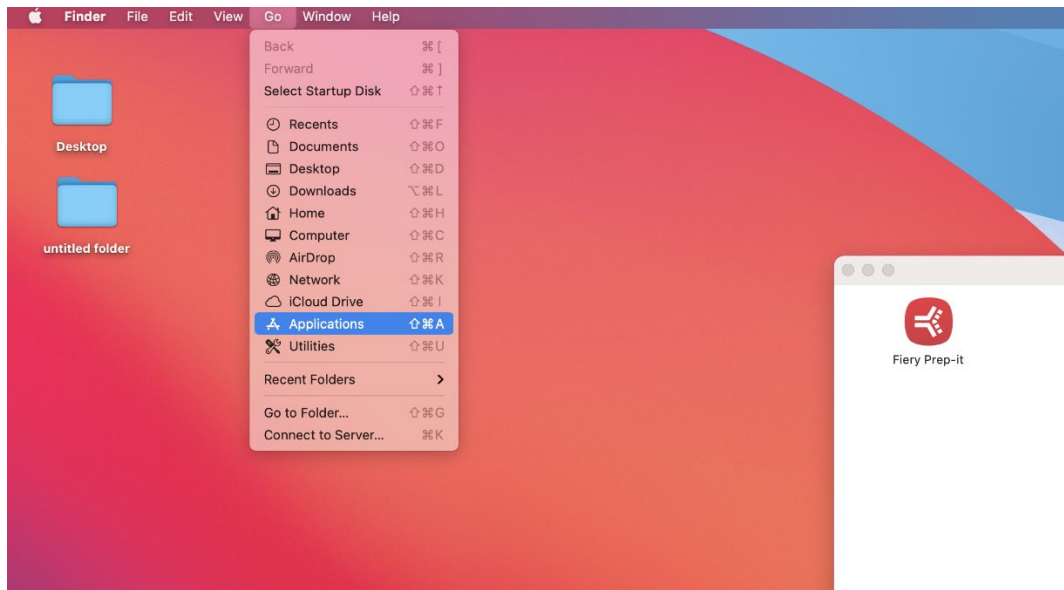


Fiery Prep-it Mac
(6.3.2.9).dmg

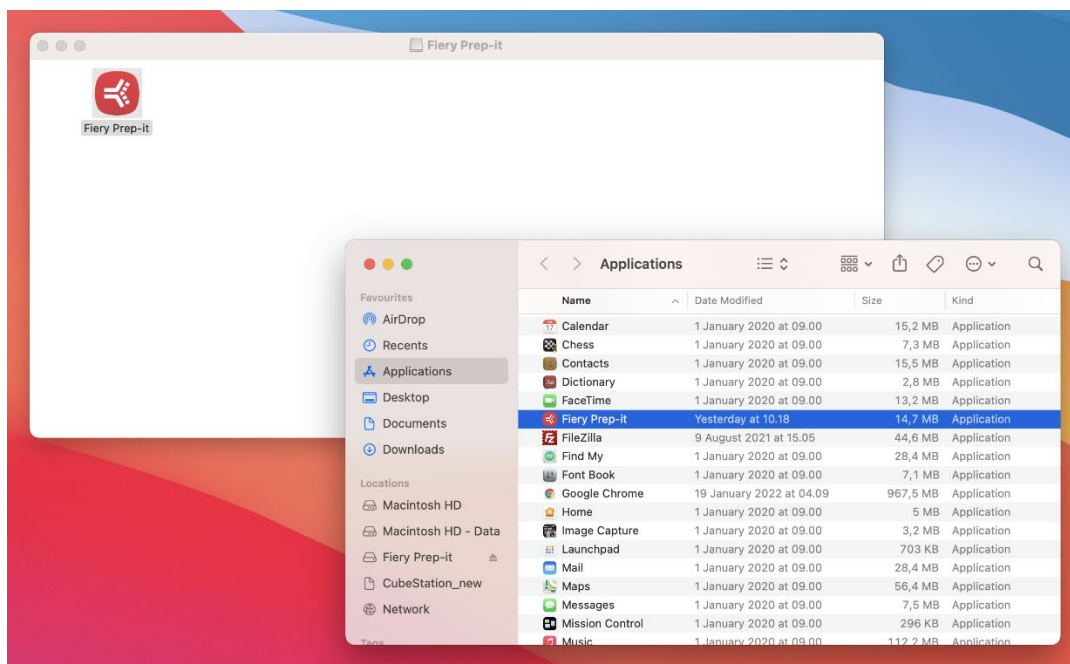
Fiery Prep-it dialog appears



Open Applications dialog on your MAC from the main menu

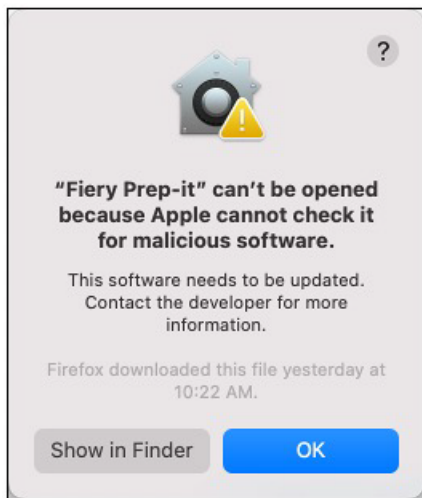


Drag **Fiery Prep-it icon** from the installer dialog into the Applications dialog



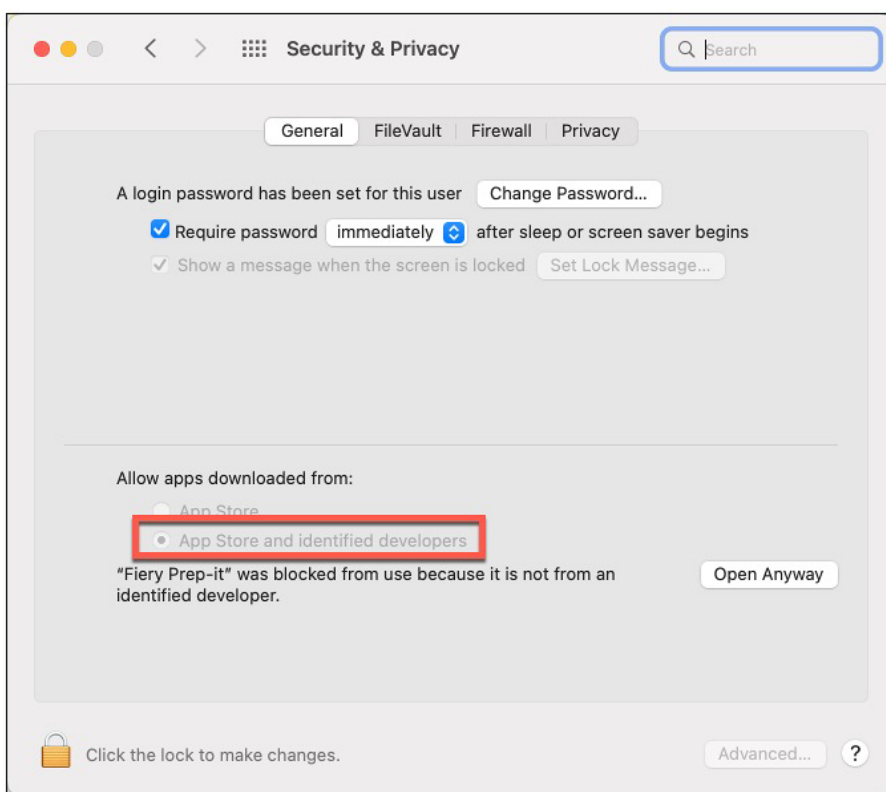
You can also drag **Fiery Prep-it icon** from the Applications dialog to the program bar in the bottom of your MAC to create short-cut.

This dialog may appear if you open Fiery Prep-it first time.



Just acknowledge by **OK**

Go to System Preferences dialog – Security & Privacy

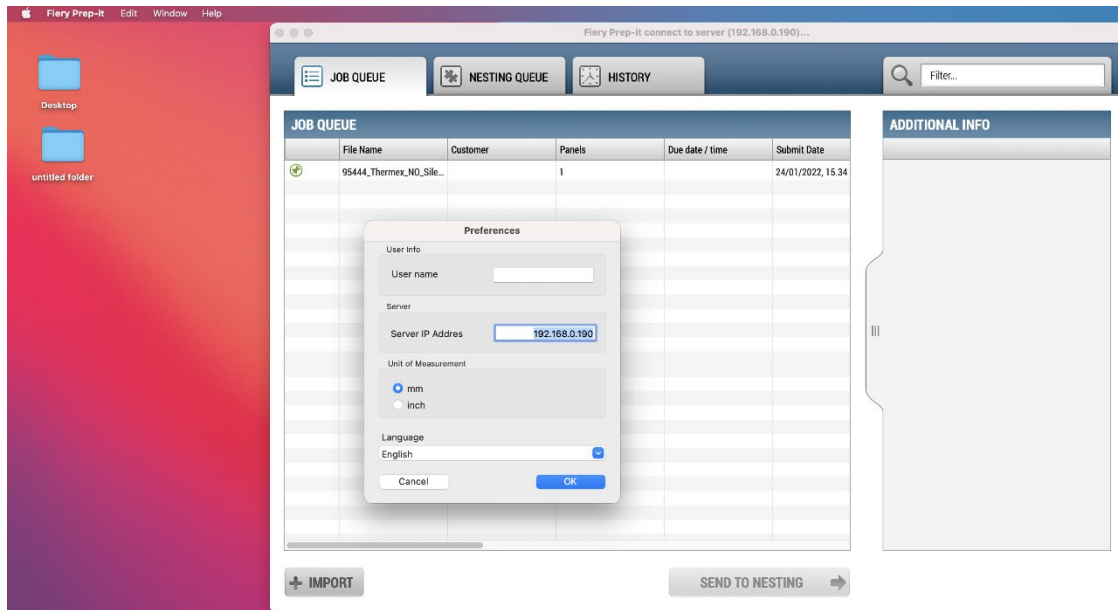


Make sure to click App Store and identified developers!
Click **Open Anyway**

Note! Fiery TCP/IP communication port is 2567.
Installation is now complete.

1.12 Configuration of the Fiery Prep-it MAC client

Open Fiery Prep-it and from the top menu click Preferences to enter Server TCP/IP address.



Fiery Prep-it MAC client is now connected to Fiery Prep-it Server.