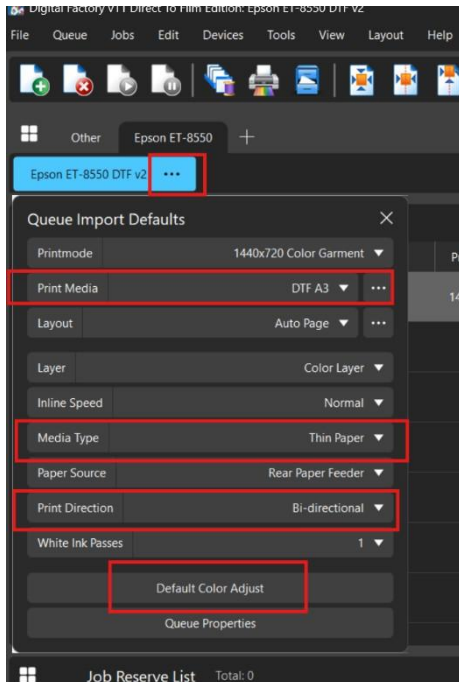


Epson ET-8550 V2 Driver Notes

Installing the Driver

When installing the Epson ET-8550, always select the V2 driver – this will allow you to set the ink order easily.

Queue Setup Tips



Click on the ellipses beside the queue name (...)

Set the media size - Example A3, 11x17 or 13x19 Media Type should be set to “Thin Paper” to prevent paper Jams
Print Direction – Bi-directional

Default Color Adjust

Use rendering intents – Photo or Graphics

- Use Photo for photo images or images with lots of color, gradients and skin tone.

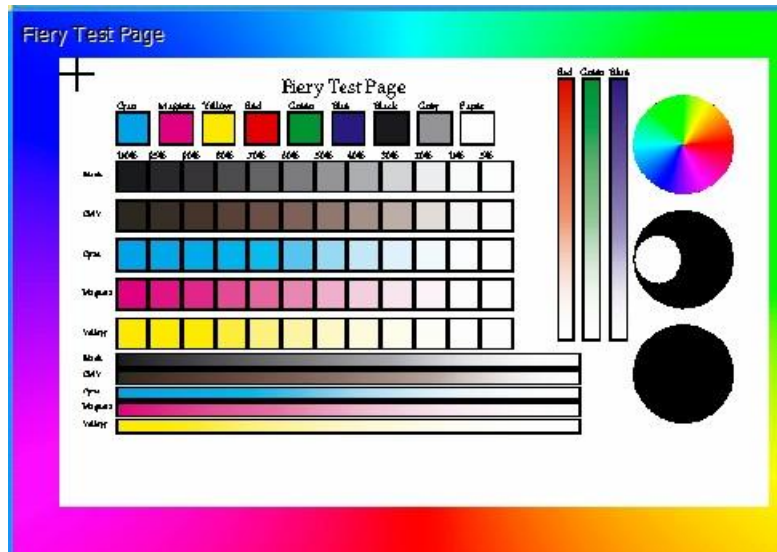
- Use Graphics for images with solid colors.

- Increase white under black to 70% under the Processing Options tab.

Set Ink Order

- Set the Ink Order from the Queue menu > Set Ink Order (if this is greyed out, ensure the V2 driver is installed)
- Print the Fiery Test Page from Devices > Quick Print Test
 1. The colors are all labeled in black and if the ink order is correct the colors should all be labeled correctly.

Epson ET-8550 V2 Driver Notes



Frequently Encountered Issues

White Printing Issues

Daily maintenance is a must.

- Shake the white ink. Consider purchasing a Continuous Ink Supply System (Ciss). This will stir the white ink for you and prevent white ink head clogs.
- Daily head cleanings and nozzle check, printed on film or colored paper, to ensure the white is printing before printing from Digital Factory.
- Please reference Youtube videos if the white ink is clogged.
- Note: Fiery does not provide support for any physical printer issues. Only contact Fiery support for issues encountered in Digital Factory or other supported software applications.

Paper Jams on the Printer

Do not change the Media setup from “Thin Paper” – Any changes to this setting may cause the paper jams on the printer.

Job stops printing ½ way through the job

Disable the Epson Status Monitor [Printing is interrupted or incomplete – How to stop the Epson status monitor process.](#)

Port Failed to Open error messages

When connecting with USB it's a good idea to [disable USB power settings in Windows.](#) Windows will put USB ports to sleep when they are not used.