

# Customer User Addendum

## EFI Fiery Central, version 2.7

### Overview

This document describes how to configure a Printer Group, map Fiery Central Paper Catalog media entries to the paper in the paper trays on the printer, and view non-Fiery driven printers in Command WorkStation on a Fiery Central Server.

The supported non-Fiery driven printers are as follows:

- Canon VarioPRINT DP 135/120/110 and Océ VarioPrint 6000 Series printers
- Kodak Digimaster printer
- Konica Minolta bizhub PRO 1051/1200/1200P, bizhub PRO 951, and bizhub PRESS 1052/1250/1250P/2250P printers
- Xerox DocuTech and Nuvera printers

**NOTE:** The term “printer” is used to refer to the non-Fiery driven printer.

This document contains the following sections:

Section	See
Before you begin	<a href="#">page 1</a>
Configure Printer Groups	<a href="#">page 2</a>
Canon or Océ printer connectivity	<a href="#">page 5</a>
Kodak Digimaster printer connectivity	<a href="#">page 11</a>
Konica Minolta printer connectivity	<a href="#">page 17</a>
Xerox DocuTech and Nuvera printers connectivity	<a href="#">page 28</a>
View non-Fiery printers in Command WorkStation	<a href="#">page 34</a>

### Before you begin

- Install Fiery Central software v2.7  
For installation instructions, see *Customer Release Notes EFI Fiery Central, version 2.7*.
- Set up the Fiery Central Server  
For more information about configuring and setting up the Fiery Central Server, see the *EFI Fiery Central Administrator Guide*.
- Configure Printer Groups  
For more information, see [“Configure Printer Groups” on page 2](#).



- Print jobs from client computers to the Fiery Central Server

For more information about sending print jobs to the Fiery Central Server from networked client computers, see the *EFI Fiery Central User Guide*.

## Fiery Central Manager

The Fiery Central Manager window appears after installing Fiery Central. The Fiery Central Manager allows you to create Printer Groups, add new printers, change Printer Group settings, and set up Paper Catalog Map.



For more information, see Fiery Central Manager Help.

---

### TO ACCESS FIERY CENTRAL MANAGER

- **Right-click Fiery Central Bar and select Fiery Central Manager.**

Or

- **Click Start > All Programs > EFI > Fiery Central > Fiery Central Manager.**

## Configure Printer Groups

Printer Groups allow the Fiery Central Server to route jobs to printers and balance them across multiple printers.

A Printer Group is defined by the printers that belong to the group, and the default print option settings associated with the group.

**NOTE:** Keep in mind the capabilities of your printers, the types of printing you will be doing, and if speed or custom printing is a priority when you create Printer Groups.

A Printer Group appears on the network as a virtual printer, and has both Print and Hold queues. Jobs printed using the Fiery Central printer driver, Hot Folders, or other printing utilities associated with the Printer Group can be tagged with any of the print options provided by printers in the group.

**NOTE:** Before you configure Printer Groups, you must have the IP address or server DNS name for each printer that you want to use with Fiery Central. You should make a note of any additional options installed with each printer.

To configure a Printer Group, use one of the following methods:

- [“Creating a Printer Group containing the Canon or Océ printer” on page 5](#)
- [“Creating a Printer Group containing the Kodak printer” on page 11](#)
- [“Creating a Printer Group containing the Konica Minolta printer” on page 18.](#)
- [“Creating a Printer Group containing the Xerox printer” on page 28.](#)

After you set up a Printer Group, you can manage the group by adding or deleting printers from the group, or view information about the Printer Group. For more information, see Fiery Central Manager Help or Command WorkStation Help.



## Setting Printer Group options

After you select all of the printers for a Printer Group, set the Printer Group defaults.

---

### TO SET PRINTER GROUP DEFAULTS

**1 Select the Load Balance option for dividing individual print jobs among the printers in the group.**

- **Fastest Single Engine** prints the entire job to the fastest printer that meets the print specifications of the job.
- **Preferred Printer** prints the entire job to the printer that you specify.

**NOTE:** You can select Preferred Printer even if there is only one printer.

- **Copy Split** sends multiple copies of a single document to different printers, based on print specifications and the current print load on each printer. To select this option, a Printer Group must include a minimum of two black-and-white printers or two color printers.

**NOTE:** Copy Split requires a minimum of two color printers or two black-and-white printers. If a Printer Group has only two printers and one is color and the other is black-and-white, Copy Split is not available.

- **Long Job Split** splits a single copy of a document across different printers. To select this option, a Printer Group must have a minimum of two black-and-white printers or two color printers.

**NOTE:** Long Job Split requires a minimum of two color printers or two black-and-white printers. If a Printer Group has only two printers and one is color and the other is black-and-white, Long Job Split is not available.

- **Color Split** splits all copies across two printers, with color content sent to the fastest color printer in the group, and black-and-white content sent to the fastest black-and-white printer in the group.

**NOTE:** Color Split requires a minimum of one color and one black-and-white printer.

**2 If you selected Preferred Printer for the Load Balance default, select a printer from the Printer Group in the Preferred Printer field.**

**3 Set the Use Printer Type default to Color and Black & White, Black & White Only, or Color Only.**

Use the option to specify whether black-and-white or color printers are used exclusively for jobs sent to this group.

#### 4 Set Cover Sheet/Merge Options.

- **None** does not generate cover sheets or insert inline pages.
- **Cover Sheet-Manual Merge** automatically generates covers sheets with information about each portion of a job, to aid in manual merging.
- **Bar Code-Offline Merge** automatically generates cover sheets containing bar codes for collation by an offline merge finisher.

**NOTE:** This option is available only when Load Balance is set to Color Split.

- **No Cover Sheet-Inline Merge** inserts preprinted pages from an inline insertion tray. This option is available only when a black-and-white printer in the group has an insertion tray.

**NOTE:** This option is available only when Load Balance is set to Color Split.

#### 5 Set the Maximum Number of Printers.

This option allows you to specify All, or to limit the number of printers over which a job may be load-balanced.

#### 6 Select Reroute on Error to send the remaining portion of a job to the Fastest Single Engine when an error occurs at the destination printer.

If you do not select this option, jobs wait in the destination printer's Print queue until the error is cleared.

If you select this option, you can set the following parameters:

- **Job Time Out** specifies how long a job waits in the destination printer's Print queue when an error occurs, before being rerouted.
- **Total Reroutes** specifies how many reroutes are allowed for a single job. When the maximum is reached, the job waits in the Print queue of the last printer until the error is cleared.

#### 7 Click Next to exit to the Save Printer Group window.

## Canon or Océ printer connectivity

The Canon VarioPRINT DP 135/120/110 and Océ VarioPrint 6000 Series printers can be added to the Fiery Central Server.

The Océ VarioPrint 6000 Series printer must meet the following minimum requirements for proper operation with Fiery Central:

- The VarioPrint 6000 Series printer software must be version 5.3 or later.
- The PRISMAsync controller software must be version 12.21.54.19 or later.

**NOTE:** Specific finishers must be installed on the VarioPRINT DP and VarioPrint 6000 Series printers to support certain finishing options.

### Adding a Canon or Océ printer to Fiery Central

When you add a Canon or Océ printer to the Fiery Central Server, you must do the following:

- Create a Canon or Océ Printer Group or add the Canon or Océ printer to an existing Printer Group with Fiery Central Manager.

For more information, see [“Creating a Printer Group containing the Canon or Océ printer” on page 5](#).

- Synchronize the Fiery Central Paper Catalog with the Canon or Océ Media catalog.

For more information, see [“Synchronizing Fiery Central Paper Catalog with the Canon or Océ Media catalog” on page 10](#).

- Map Canon or Océ media to a paper tray on the Canon or Océ printer.

For more information, see [“Mapping Canon or Océ Media catalog” on page 10](#).

- View the Printer Group and Canon or Océ printer in Command WorkStation.

For more information, see [“View non-Fiery printers in Command WorkStation” on page 34](#).

For more information, see Command WorkStation Help.



### Creating a Printer Group containing the Canon or Océ printer

You must create a Printer Group to allow Fiery Central to print jobs to the Canon or Océ printer.

**NOTE:** The Océ VarioPrint 6000 Series printer is shown in the procedure.

---

#### TO CREATE A PRINTER GROUP

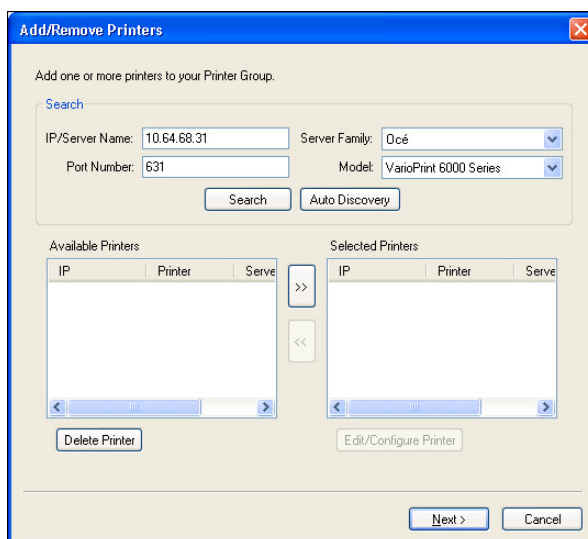
- 1 In the Fiery Central Manager window, select the Printer Groups tab.
- 2 Click Add to add a new group.

- 3 Type a Group Name to identify the Printer Group, add a description, if desired, and then click Next.**

A Group Name can be up to 16 characters long. The name cannot include special characters, hyphens, spaces, or underscores.

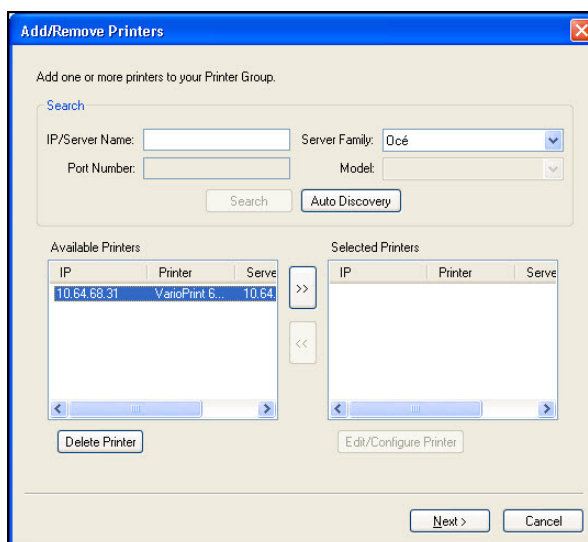
- 4 Type the IP address or printer name for the Canon or Océ printer in the IP/Server Name field.**
- 5 Select Canon or Océ for the Server Family and select the Canon VarioPRINT DP or Océ VarioPrint 6000 Series printer model from the Model list.**

The Port Number field is filled in by default (631).



- 6 Click Search.**

**NOTE:** Auto Discovery will not find non-Fiery printers or generic PostScript printers on the network.



- 7 Locate the VarioPRINT DP Series or VarioPrint 6000 Series printer in the Available Printers list that you want to include in the Printer Group, and click the arrow button (>>) to move it to the Selected Printers list.
- 8 Manually set the installable options to match those that are installed on the printer, and then click OK.

**NOTE:** The Paper Catalog Map feature is not available for the printer.

- 9 Click Next in the Add/Remove Printers window.

You can add additional printers to the Printer Group before you click Next.

**10 Specify Printer Group options and click Next.**

For more information, see [“Setting Printer Group options”](#) on page 3.



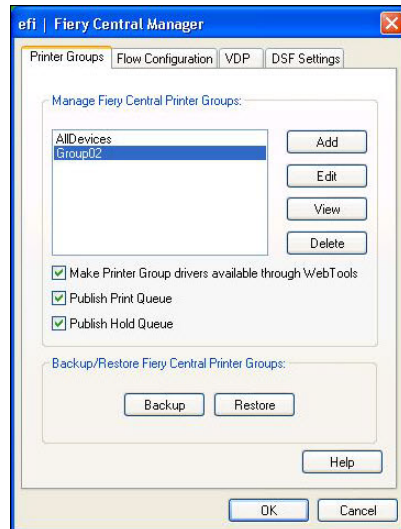
**NOTE:** The available Printer Group options are determined by the printers that belong to the Printer Group. For more information about Printer Group options, see Fiery Central Manager Help or Command WorkStation Help.

**11 Review all the settings that have been selected for the Printer Group you are creating.**

**12 Click Save to save the Printer Group. Click Cancel to discard the current Printer Group and recreate it with different options.**



- 13 With the Printer Group selected in the Fiery Central Manager Printer Groups pane, select Make Printer Group drivers available through WebTools if you would like users to be able to download Fiery Central printer drivers through an Internet browser.



**NOTE:** If you are using a Windows or Mac OS client, this option should be selected so users can download the printer driver files and associated printer files from the Web.

- 14 Select the printer queues that you want to publish (selected by default).
- 15 To save changes and create the Printer Group, click OK in the Fiery Central Manager dialog box.



## Synchronizing Fiery Central Paper Catalog with the Canon or Océ Media catalog

Before you print jobs, you should synchronize the Fiery Central Paper Catalog with the Canon or Océ Media catalog on the Canon or Océ printer.

---

### TO SYNCHRONIZE THE FIERY CENTRAL PAPER CATALOG WITH THE CANON OR OCÉ MEDIA CATALOG

- **Go to C:\EFI\Server\System, double-click PaperCatalog.exe, and follow the on-screen instructions.**

The PaperCatalog.exe application detects all the Canon VarioPRINT DP or Océ VarioPrint 6000 Series printers configured in a Fiery Central printer group, then overwrites the media catalog on Canon VarioPRINT DP or Océ VarioPrint 6000 Series printers with the Fiery Central Paper Catalog.

## Mapping Canon or Océ Media catalog

Canon or Océ Media catalog mapping is done on the printer display panel.

---

### TO MAP CANON OR OCÉ MEDIA TO A PAPER TRAY

- 1 **On the printer touch panel, press the Trays tab.**
- 2 **Select a tray with the loaded media.**
- 3 **Press Assign.**
- 4 **Select the media from the Media catalog list, and press OK.**

**NOTE:** If a job is printing and requires a specific media that is not mapped to a paper tray, press Assign, select the media at the top of the Media catalog list, and then click OK.

## Kodak printer connectivity

The Kodak Digimaster printer can be added to the Fiery Central Server.

**NOTE:** Specific finishers must be installed on the Digimaster printer to support certain finishing options.

### Adding an Kodak printer to Fiery Central

When you add an Kodak printer to the Fiery Central Server, you must do the following:

- Create an Kodak Printer Group or add the Kodak printer to an existing Printer Group with Fiery Central Manager.

For more information, see [“Creating a Printer Group containing the Kodak printer” on page 11](#).

- View the Printer Group and Kodak printer in Command WorkStation.

For more information, see [“View non-Fiery printers in Command WorkStation” on page 34](#).

For more information, see Command WorkStation Help.



### Creating a Printer Group containing the Kodak printer

You must create a Printer Group to allow Fiery Central to print jobs to the Kodak printer.

---

#### TO CREATE A PRINTER GROUP

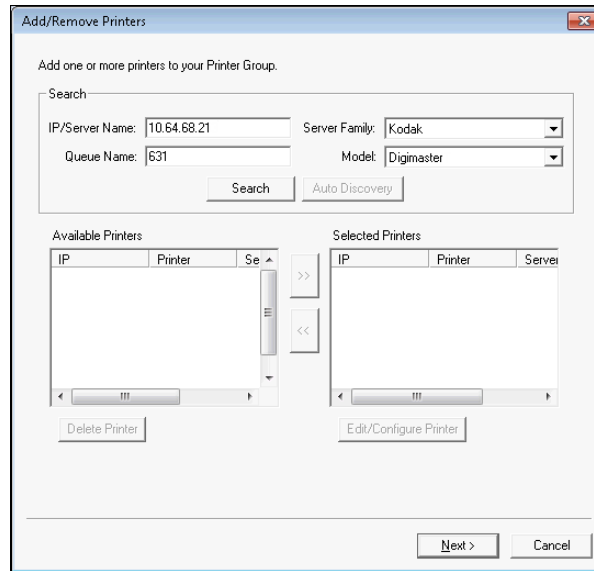
- 1 In the Fiery Central Manager window, select the Printer Groups tab.
- 2 Click Add to add a new group.
- 3 Type a Group Name to identify the Printer Group, add a description, if desired, and then click Next.

A Group Name can be up to 16 characters long. The name cannot include special characters, hyphens, spaces, or underscores.

- 4 Type the IP address or printer name for the Kodak printer in the IP/Server Name field.

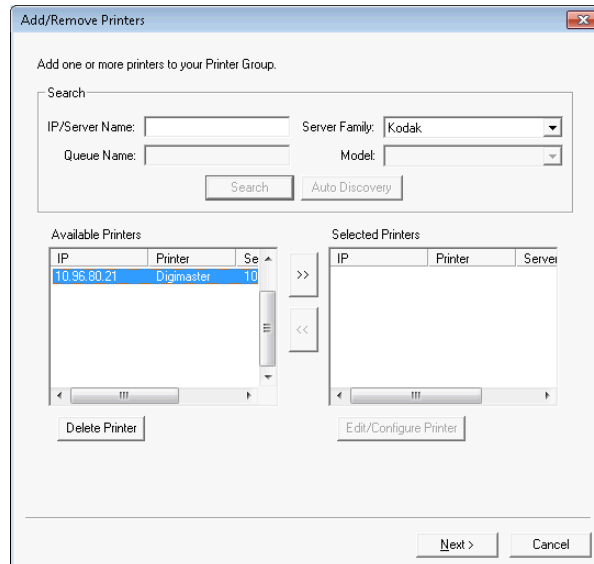
**5 Select Kodak for the Server Family and select the Kodak Digimaster printer model from the Model list.**

The Port Number field is filled in by default (631).



**6 Click Search.**

**NOTE:** Auto Discovery will not find non-Fiery printers or generic PostScript printers on the network.



**7 Locate the Digimaster printer in the Available Printers list that you want to include in the Printer Group, and click the arrow button (>>) to move it to the Selected Printers list.**

## 8 Click Paper Catalog Map.

**Edit/Configure Printer**

**Printer Information**

Printer Name:

Pages per Minute:  (10...999)

☐ Inline Merge: Manual Release

**Paper Catalog**

Status: Paper Catalog Map not completed.

**Installable Options**

Finisher Option:

High Capacity Stacker:

Post-fuser Tray:

Punch Unit:

## 9 Manually set the media attributes available on the Kodak printer with a Fiery Central Paper Catalog media entry and click Save.

**efi | Fiery Central - Paper Catalog Map**

**Printers:**

Digimaster 10.96.80.21

Remote Paper Catalog	Fiery Central Paper Catalog
A4	(Not Mapped)
Letter	Tab - (90# Standard 8 Bank 3 Hole)
FC_Tabloid	W Standard White - 8.5 x 11
Tabloid	FC_A4_Blue
A3	Coated A_Letter_LEF
Cover	Fiery_Blue
A4Cover	Tray 5
Color	(Not Mapped)
A4Color	(Not Mapped)
TabloidColor	(Not Mapped)
A3Color	(Not Mapped)
Legal	(Not Mapped)
A4Tab	(Not Mapped)

**10 Manually specify the Installable Options on the printer, and then click OK.**

**Edit/Configure Printer**

Printer Information

Printer Name: Digimaster

Pages per Minute: 125 (10...999)

☐ Inline Merge: Manual Release

Paper Catalog

Status: Paper Catalog Map completed.

Paper Catalog Map

Installable Options

Finisher Option

Not Installed

High Capacity Stacker

Not Installed

Post-fuser Tray

Not Installed

Punch Unit

Not Installed

OK Cancel

**11 Click Next.**

You can add additional printers to the Printer Group before you click Next.

**Add/Remove Printers**

Add one or more printers to your Printer Group.

Search

IP/Server Name: Queue Name: Server Family: Kodak Model: Digimaster

Search Auto Discovery

Available Printers

IP	Printer	Se
----	---------	----

>> <<

Selected Printers

IP	Printer	Server
10.96.80.21	Digimaster	10.96.

Delete Printer Edit/Configure Printer

Next > Cancel

## 12 Specify Printer Group options and click Next.

For more information, see [“Setting Printer Group options”](#) on page 3.

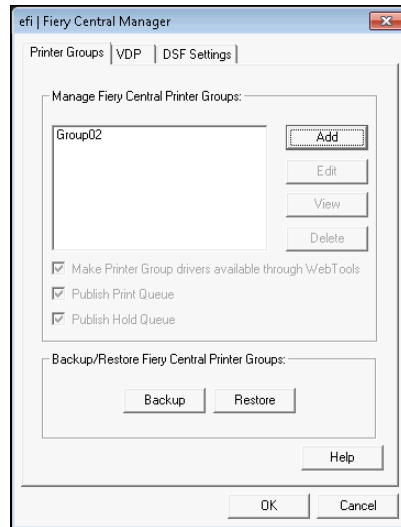


**NOTE:** The available Printer Group options are determined by the printers that belong to the Printer Group. For more information about Printer Group options, see Fiery Central Manager Help or Command WorkStation Help.

## 13 Review all the settings that have been selected for the Printer Group you are creating.

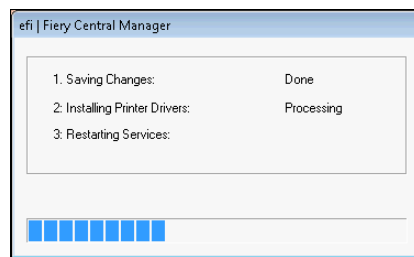
## 14 Click Save to save the Printer Group. Click Cancel to discard the current Printer Group and recreate it with different options.

- 15 With the Printer Group selected in the Fiery Central Manager Printer Groups pane, select Make Printer Group drivers available through WebTools if you would like users to be able to download Fiery Central printer drivers through an Internet browser.



**NOTE:** If you are using a Windows or Mac OS client, this option should be selected so users can download the printer driver files and associated printer files from the Web.

- 16 Select the printer queues that you want to publish (selected by default).
- 17 To save changes and create the Printer Group, click OK in the Fiery Central Manager dialog box.





## Konica Minolta printer connectivity

The Konica Minolta bizhub PRO 1051/1200/1200P, bizhub PRO 951, and bizhub PRESS 1052/1250/1250P/2250P printers must meet the following minimum requirement for proper operation with Fiery Central:

- The bizhub PRO 1051/1200/1200P printers must have Special Firmware GCK-20 or later installed (available through standard Konica Minolta service channels).
- A firmware update is not required for bizhub PRO 951 and PRESS 1052/1250/1250P/2250P printers.

**NOTE:** The bizhub PRO 1051/1200/1200P, bizhub PRO 951, and bizhub PRESS 1052/1250/1250P/2250P printers need specific finishers installed to support certain finishing options. For example, the Post-fuser Insertion (PI) tray is required for Color Split with Inline Merge.

When you use the Konica Minolta bizhub PRO 1051/1200/1200P, bizhub PRO 951, and bizhub PRESS 1052/1250/1250P/2250P printers, keep the following in mind:

- Blank inserts always follows preprinted color inserts during a Color Split Inline Merge job.
- The printer shares a common binding edge for both duplexing and all types of finishing, making some combinations of duplexing and finishing impossible to support (such as adding a double top staple on a long edge-bound duplex job). Note that punching and stapling also share a common binding edge that limits possible combinations of those finishing features.
- Turning on finishing features automatically directs the job to an output area selected by the printer, overriding the output area selected in Job Properties.
- Some invalid combinations of finishing features may not be prevented by Fiery Central Job Properties. This ensures that multiple printers in a Printer Group are not restricted by constraints that apply to only one of the printers. In the event that an invalid combination of finishing features is selected, some or all of the features may be omitted automatically by the printer.
- If Paper Catalog selections are not made in Fiery Central for the body media as well as any mixed media inserts or page ranges, the printer may automatically choose stocks on behalf of the operator, and these stocks may not be appropriate for the job.
- Jobs containing embedded tab pages preformatted for stock sizes larger than the body page size (for example, 9 x 11-inch tab pages in an 8.5 x 11-inch job) are not supported by the printer. The printer requires all pages of a job, including tabs, to share a common body paper size. The printer allows a tab shift for the tab pages, which must be designated using the Fiery Central Mixed Media feature in Job Properties.
- The printer makes the determination of whether to print jobs with short edge feed (SEF) or long edge feed (LEF) based on the available finishing features in conjunction with its Auto Tray Selection feature. In cases where the finishing is supported in either orientation, for example, stapling, the style of finishing, such as slanted or vertical stapling, may change, depending upon the SEF/LEF orientation decided by the printer.

## Adding a Konica Minolta printer to Fiery Central

When you add a Konica Minolta bizhub PRO 1051/1200/1200P, bizhub PRO 951, or bizhub PRESS 1052/1250/1250P/2250P printer to the Fiery Central Server, you must do the following:

- Create a Konica Minolta Printer Group or add the Konica Minolta bizhub PRO printer to an existing Printer Group with Fiery Central Manager.

For more information, see [“Creating a Printer Group containing the Konica Minolta printer” on page 18](#).

- Register paper types to paper trays on the Konica Minolta printer.

For more information, see [“Registering media types to paper trays on the Konica Minolta printer” on page 23](#).

- Use Fiery Central Tray-based Paper Catalog.

For more information, see [“Using Fiery Central Tray-based Paper Catalog” on page 25](#).

- Print a job that requires a specific paper type.

For more information, see [“Printing a job that requires a specific media type” on page 26](#).

- Print a perfect binding job.

For more information, see [“Printing a job with Perfect binding” on page 26](#).

- View the Printer Group and Konica Minolta printer in Command WorkStation.

For more information, see [“View non-Fiery printers in Command WorkStation” on page 34](#).

For more information, see Command WorkStation Help.



## Creating a Printer Group containing the Konica Minolta printer

You must create a Printer Group to allow Fiery Central to print jobs to the Konica Minolta bizhub PRO printer.

---

### TO CREATE A PRINTER GROUP

- 1 In the Fiery Central Manager window, click the Printer Groups tab.
- 2 Click Add to add a new group.
- 3 Type a Group Name to identify the Printer Group, add a description, if desired, and then click Next.

A Group Name can be a maximum of 16 characters. The name cannot include special characters, hyphens, spaces, or underscores.

- 4 Type the IP address or printer name for the Konica Minolta printer in the IP/Server Name field.

**5 Select Konica Minolta for the Server Family and select the bizhub PRO printer model from the Model list.**

The Port Number field is filled in by default (631).

**Add/Remove Printers**

Add one or more printers to your Printer Group.

**Search**

IP/Server Name: 10.64.68.49    Server Family: Konica Minolta  
 Port Number: 631    Model: bizhub PRO 1051

[Search] [Auto Discovery]

**Available Printers**

IP	Printer	Serve
----	---------	-------

[Delete Printer]

**Selected Printers**

IP	Printer	Serve
----	---------	-------

[Edit/Configure Printer]

[Next >] [Cancel]

**6 Click Search.**

**NOTE:** Auto Discovery will not find non-Fiery printers or generic PostScript printers on the network.

**Add/Remove Printers**

Add one or more printers to your Printer Group.

**Search**

IP/Server Name:    Server Family: Konica Minolta  
 Port Number:    Model:

[Search] [Auto Discovery]

**Available Printers**

IP	Printer	Serve
10.64.68.49	bizhub PRO...	10.64.

[Delete Printer]

**Selected Printers**

IP	Printer	Serve
----	---------	-------

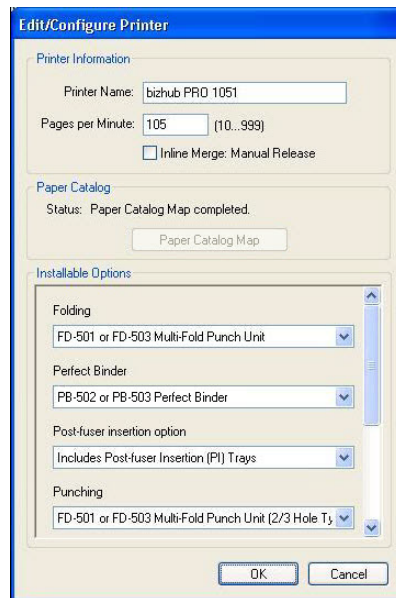
[Edit/Configure Printer]

[Next >] [Cancel]

**7 Locate the bizhub PRO printer that you want to include in the Printer Group in the Available Printers list, and click the arrow button (>>) to move it to the Selected Printers list.**

- 8 Verify that the installable options listed match those that are installed on the printer, and then click OK.

**NOTE:** The Paper Catalog Map feature is not available for the printer. For information about paper settings, see [“Registering media types to paper trays on the Konica Minolta printer” on page 23.](#)



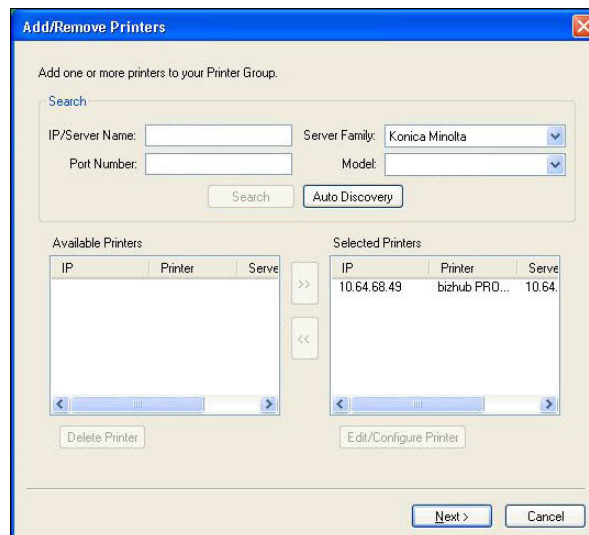
The **Edit/Configure Printer** dialog box is shown. It has three main sections: **Printer Information**, **Paper Catalog**, and **Installable Options**.

- Printer Information:**
  - Printer Name: bizhub PRO 1051
  - Pages per Minute: 105 (10...999)
  - ☐ Inline Merge: Manual Release
- Paper Catalog:**
  - Status: Paper Catalog Map completed.
  - Button: Paper Catalog Map
- Installable Options:**
  - Folding: FD-501 or FD-503 Multi-Fold Punch Unit
  - Perfect Binder: PB-502 or PB-503 Perfect Binder
  - Post-fuser insertion option: Includes Post-fuser Insertion (PI) Trays
  - Punching: FD-501 or FD-503 Multi-Fold Punch Unit (2/3 Hole Ty

Buttons at the bottom: OK, Cancel.

- 9 Click **Next** in the **Add/Remove Printers** dialog box.

You can add additional printers to the Printer Group before you click Next.



The **Add/Remove Printers** dialog box is shown. It has a search section and two list boxes: **Available Printers** and **Selected Printers**.

**Search:**

- IP/Server Name:
- Port Number:
- Server Family: Konica Minolta
- Model:
- Buttons: Search, Auto Discovery

**Available Printers:**

IP	Printer	Server

**Selected Printers:**

IP	Printer	Server
10.64.68.49	bizhub PRO...	10.64.

Buttons at the bottom: Next >, Cancel.

**10 Specify Printer Group options and click Next.**

For more information, see [“Setting Printer Group options”](#) on page 3.

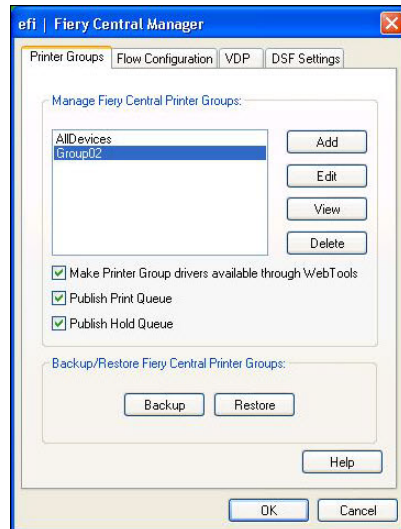


**NOTE:** The available Printer Group options are determined by the printers that belong to the Printer Group. For more information about Printer Group options, see Fiery Central Manager Help or Command WorkStation Help.

**11 Review all of the settings selected for the Printer Group that you are creating.**

**12 Click Save to save the Printer Group. Click Cancel to discard the current Printer Group and recreate it with different options.**

- 13 With the Printer Group selected in the Fiery Central Manager Printer Groups pane, select Make Printer Group drivers available through WebTools if you want users to be able to download Fiery Central printer drivers through an Internet browser.



**NOTE:** If you are using a Windows or Mac OS computer, this option should be selected so users can download the printer driver files and associated printer files from the Web.

- 14 Select the printer queues that you want to publish (selected by default).
- 15 To save changes and create the Printer Group, click OK in the Fiery Central Manager dialog box.



## Registering media types to paper trays on the Konica Minolta printer

Konica Minolta media type registration is done on the printer touch panel.

When you register the media type on the Konica Minolta printer, there must be a match to a Fiery Central Paper Catalog media entry to ensure that jobs sent to the printer print correctly.

The Fiery Central Paper Catalog provides a uniform inventory of media, allowing you to specify the exact media that you want for a job. When Fiery Central Paper Catalog media is mapped to corresponding media on the Konica Minolta printer, jobs printed with Paper Catalog media print with that media.

**NOTE:** The orientation and paper size are determined by the job. The paper size of the job must match paper loaded in one of the paper trays of the printer. If there is a mismatch, the job produces an error on the printer.

---

### TO CREATE PAPER SETTING REGISTRATION ON THE PRINTER

- 1 **On the printer touch panel, press the Machine tab.**
- 2 **Press Paper Setting Reg./Del.**
- 3 **Locate an unassigned paper slot and select it.**

Use the up and down arrows to scroll through the list to locate an available paper slot.

- 4 **Press Add/Edit.**
- 5 **Press Name.**
- 6 **Type a name in the Input Name field and press OK.**

The Input Name field has a maximum limit of 22 characters.

The paper type name must exactly match the first 22 characters of the media entry name in the Fiery Central Paper Catalog, even though the Fiery Central Paper Catalog media entry name may have more than 22 characters. The name includes uppercase and lowercase, punctuation, numbers, and symbols.

**NOTE:** The name must be an exact match to the Fiery Central Paper Catalog name, including case, punctuation, numbers, and symbols.

- 7 **Specify other attributes, if needed, such as paper weight and paper type.**

Only six color paper settings are available on the Konica Minolta printer. The following table provides the mapping between the Fiery Central Paper Catalog paper colors and the colors available on the printer.

Konica Minolta printer color paper settings	Fiery Central server Fiery Central Paper Catalog color paper settings
White	Black, Gray, Silver, White, LightBlack, LightGray, LightSilver, LightWhite, DarkBlack, DarkGray, DarkSilver, DarkWhite,
Blue	Blue, Cyan, Turquoise, LightBlue, LightCyan, LightTurquoise, DarkBlue, DarkCyan, DarkTurquoise

**Konica Minolta printer  
color paper settings****Fiery Central server  
Fiery Central Paper Catalog color paper settings**

Yellow	Brown, Buff, Gold, Goldenrod, Ivory, Mustard, Orange, Yellow, LightBrown, LightBuff, LightGold, LightGoldenrod, LightIvory, LightMustard, LightOrange, LightYellow, DarkBrown, DarkBuff, DarkGold, DarkGoldenrod, DarkIvory, DarkMustard, DarkOrange, DarkYellow
Green	Green, LightGreen, DarkGreen
Pink	Magenta, Pink, Red, Violet, LightMagenta, LightPink, LightRed, LightViolet, DarkMagenta, DarkPink, DarkRed, DarkViolet
Transparent	NoColor

**8 Press OK to exit the Paper Setting Reg./Del. screen.**

After the paper setting registration on the printer is complete, you must register the media type to a paper tray on the printer.

**TO REGISTER THE MEDIA TYPE TO A PAPER TRAY ON THE PRINTER**

- 1 On the printer touch panel, press Machine.**
- 2 Press Tray Setting.**
- 3 From the available list, select a paper tray that does not have a media type registered to it.**
- 4 Press Recall to locate the Paper Setting Registration.**
- 5 Select the registered media type and press OK.**
- 6 Press Close to close the Tray Setting screen.**

For more information about registering media types to paper trays, see the documentation that accompanies your printer.



## Using Fiery Central Tray-based Paper Catalog

The Fiery Central Tray-based Paper Catalog feature can be used with Konica Minolta bizhub PRO 1051/1200/1200P, bizhub PRO 951, and bizhub PRESS 1052/1250/1250P/2250P printers.

Fiery Central provides tray-based paper catalog mapping that directly selects printer trays. This allows you to select a Fiery Central paper catalog entry that corresponds to the tray on the printer that holds the media you want for the job. For example, if a job uses a paper catalog entry called “Tray 1”, any media in that tray will be used for the job. No additional media registration is required.

Fiery Central tray-based paper catalog files are located on the largest drive on the Fiery Central Server or the drive that contains the Fiery Central installation folder, such as C:\EFI\server\km\_tray\_catalog\. There is a paper catalog import file for each paper size and orientation that is supported on the printer. The files follow the naming convention “km\_‘pagesize’\_tray\_catalog.xml” with the following supported page sizes: 8.125x13.25, 8K, 8x13, 11x17, 11x17Wide, 12x18Wide, 13x19, 16K, A3, A3Extra, A4, A4Extra, A4Tab, A5, A5Extra, B4, B4Extra, B5, B5Extra, Executive, FanFoldGermanLegal, Folio, HalfLetterPro, ISOB4, ISOB4Extra, ISOB5, ISOB5Extra, Legal, Letter, LetterExtra, LetterTab Postcard, SRA3, SRA4, Statement, Tabloid, and TabloidExtra.

---

### TO IMPORT A TRAY-BASED PAPER CATALOG FILE

- 1 In Command WorkStation, click **Server > Paper Catalog**.
- 2 Click **Import > Merge with Existing** and navigate to **E:\EFI\server\km\_tray\_catalog\**.

**NOTE:** The root drive letter, for example E:, depends on the partition that you installed the Fiery Central software.

- 3 **Select the file that contains the page size you want to work with and click Open.**

You will see multiple Post Insertter (PI) tray and tray entries that correspond to the page size you selected with the associated orientation.

- 4 **Click “X” to close the Paper Catalog dialog box.**

You can use these tray-based paper catalog entries anywhere that accepts paper catalog media as an input.

The required orientation and paper size are determined by the job. The paper size of the job must match the paper loaded in the selected paper tray of the printer. If there is a mismatch, the job produces an error on the printer.

## Printing a job that requires a specific media type

If a job is printing and requires a specific media type that is not registered to a paper tray, you must assign the requested paper to an available paper tray on the printer.

---

### TO REGISTER THE REQUESTED MEDIA TYPE TO A PAPER TRAY

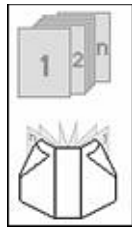
- 1 Load the requested paper in a designated paper tray.
- 2 On the printer touch panel, press Detail Check to register the paper to the designated paper tray.
- 3 Press Change Setting to assign the loaded paper to the paper tray.
- 4 Press the Start button on the printer to restart the printing of the job.

## Printing a job with Perfect binding

The Perfect binding method prints jobs in booklet format. With Perfect binding, separate, folded pages are printed and stacked in booklet order. Finished pages are stitched adjacent to one another for trimming or gluing.

You can select the binding mode, cover tray, duplex printing, trimming, and spine width. Cover Print Mode allows you to control how the complete Perfect binding cover sheet is made up from the contents of the covers (front and back) and the spine.

The available Cover Print Mode options are as follows:



#### Cover Blank

The Perfect Binding cover sheet is not printed.

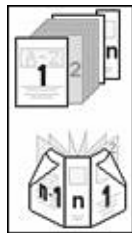


#### Cover Print 2in1

The first and last page of the document are used to print the front and back cover.

With duplex printing, the first two pages and the last two pages of the document are used to print the front and back cover.

The spine is left blank.

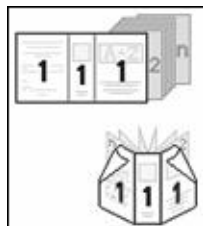


#### Cover Print 3in1

The first page and the second to last page of the document are used to print the front and back cover. The last page of the document is used to print the spine.

With duplex printing, the first two pages and the last two pages of the document are used to print the front and back cover.

The last page of the document does not need to be a special size to match the spine width. However, its content must be centered to fit on the spine.



#### Cover Print 1in1

The first page of the document is used to print the complete perfect binding cover sheet.

With duplex printing, the first and second pages of the document are used to print the complete perfect binding cover sheet.

The first page (or first two pages) must be the same size of the perfect binding cover sheet.

Documents with mixed page sizes can be made for example, using the Microsoft Word section function or Adobe Acrobat insert page function.

## Xerox DocuTech and Nuvera printers connectivity

The Xerox DocuTech or Nuvera printer can be added to the Fiery Central server.

**NOTE:** The Xerox DocuTech and Nuvera printers need specific finishers installed to support certain finishing options.

### Adding a Xerox printer to Fiery Central

When you add to the Fiery Central server, you need to do the following:

- Create a Xerox Printer Group or add the Xerox printer to an existing Printer Group with Fiery Central Manager.

For more information, see [“Creating a Printer Group containing the Xerox printer” on page 28.](#)

- View the Printer Group and Xerox printer in Command WorkStation.

For more information, see [“View non-Fiery printers in Command WorkStation” on page 34.](#)

For more information, see Command WorkStation Help.



### Creating a Printer Group containing the Xerox printer

You must create a Printer Group to allow Fiery Central to print jobs to the Xerox printer.

---

#### TO CREATE A PRINTER GROUP

- 1 In the Fiery Central Manager window, click the Printer Groups tab.
- 2 Click Add to add a new group.
- 3 Type a Group Name to identify the Printer Group, add a description, if desired, and then click Next.

A Group Name can be a maximum of 16 characters. The name cannot include special characters, hyphens, spaces, or underscores.

- 4 Type the IP address or printer name for the Xerox printer in the IP/Server Name field.

- 5 **Select Xerox for the Server Family and select the DocuTech or Nuvera printer model from the Model list.**

The Port Number field is filled in by default (631).

**Add/Remove Printers**

Add one or more printers to your Printer Group.

**Search**

IP/Server Name: 10.64.68.56    Server Family: Xerox  
 Port Number: 631    Model: DocuTech 6180

[Search] [Auto Discovery]

**Available Printers**

IP	Printer	Serve
----	---------	-------

[Delete Printer]

**Selected Printers**

IP	Printer	Serve
----	---------	-------

[Edit/Configure Printer]

[Next >] [Cancel]

- 6 **Click Search.**

**NOTE:** Auto Discovery will not find non-Fiery printers or generic PostScript printers on the network.

**Add/Remove Printers**

Add one or more printers to your Printer Group.

**Search**

IP/Server Name:    Server Family: Xerox  
 Port Number:    Model:

[Search] [Auto Discovery]

**Available Printers**

IP	Printer	Serve
10.64.68.56	DocuTech ...	10.64.

[Delete Printer]

**Selected Printers**

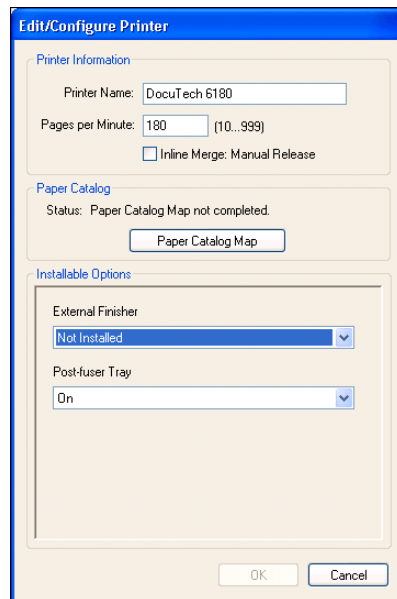
IP	Printer	Serve
----	---------	-------

[Edit/Configure Printer]

[Next >] [Cancel]

- 7 **Locate the DocuTech or Nuvera printer in the Available Printers list that you want to include in the Printer Group, and click the arrow button (>>) to move it to the Selected Printers list.**

## 8 Click Paper Catalog Map.



**Edit/Configure Printer**

**Printer Information**

Printer Name: DocuTech 6180

Pages per Minute: 180 (10...999)

☐ Inline Merge: Manual Release

**Paper Catalog**

Status: Paper Catalog Map not completed.

[Paper Catalog Map](#)

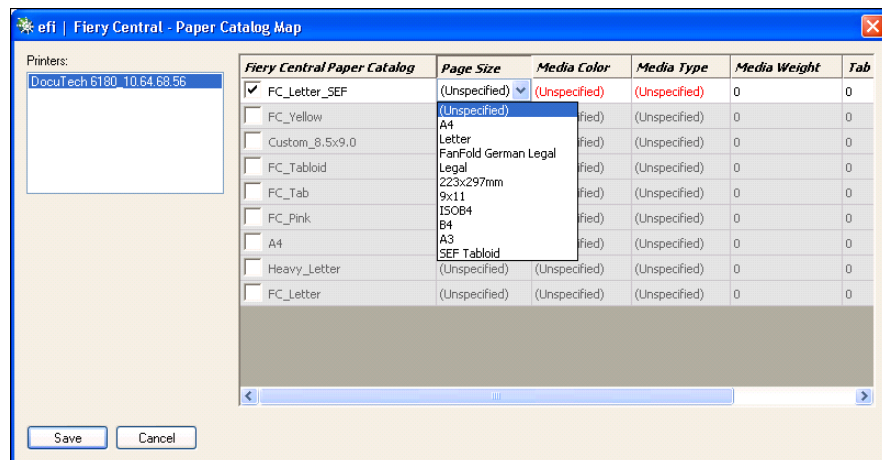
**Installable Options**

External Finisher: Not Installed

Post-fuser Tray: On

OK Cancel

## 9 Manually set the media attributes available on the Xerox printer with a Fiery Central Paper Catalog media entry and click Save.



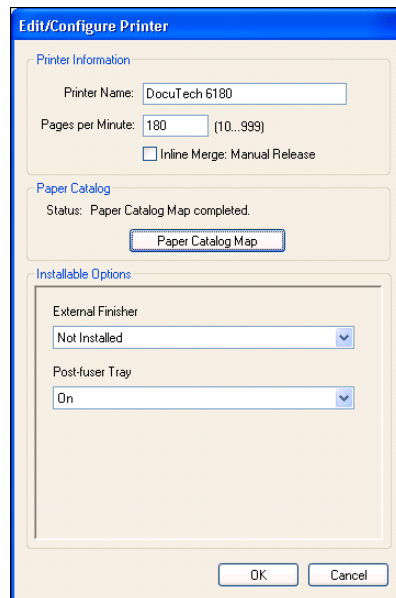
**efi | Fiery Central - Paper Catalog Map**

Printers: DocuTech 6180 10.64.68.56

Fiery Central Paper Catalog	Page Size	Media Color	Media Type	Media Weight	Tab
<input checked="" type="checkbox"/> FC_Letter_SEF	(Unspecified)	(Unspecified)	(Unspecified)	0	0
<input type="checkbox"/> FC_Yellow	(Unspecified)	(Unspecified)	(Unspecified)	0	0
<input type="checkbox"/> Custom_8.5x9.0	A4	(Unspecified)	(Unspecified)	0	0
<input type="checkbox"/> FC_Tabloid	Letter	(Unspecified)	(Unspecified)	0	0
<input type="checkbox"/> FC_Tab	FanFold German Legal	(Unspecified)	(Unspecified)	0	0
<input type="checkbox"/> FC_Pink	223x297mm	(Unspecified)	(Unspecified)	0	0
<input type="checkbox"/> A4	9x11	(Unspecified)	(Unspecified)	0	0
<input type="checkbox"/> Heavy_Letter	ISO B4	(Unspecified)	(Unspecified)	0	0
<input type="checkbox"/> FC_Letter	A3	(Unspecified)	(Unspecified)	0	0
<input type="checkbox"/> FC_Letter	SEF Tabloid	(Unspecified)	(Unspecified)	0	0

Save Cancel

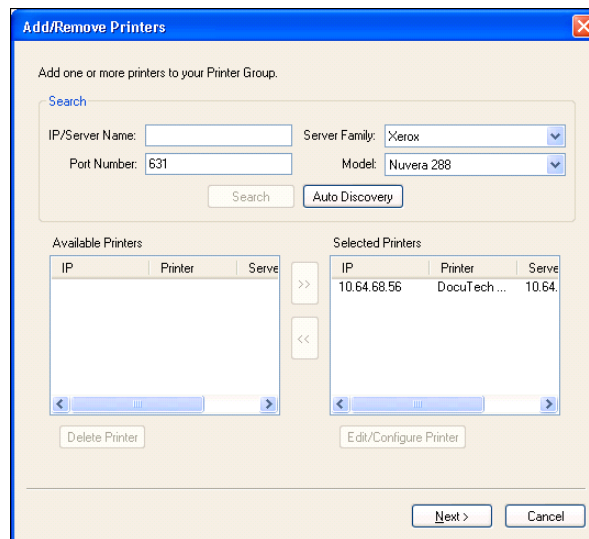
**10 Manually specify the Installable Options on the printer, and then click OK.**



The **Edit/Configure Printer** dialog box is shown. It has three tabs: **Printer Information**, **Paper Catalog**, and **Installable Options**. The **Printer Information** tab is active, showing fields for **Printer Name** (DocuTech 6180), **Pages per Minute** (180), and a checkbox for **Inline Merge: Manual Release**. The **Paper Catalog** tab shows the status **Paper Catalog Map completed.** and a **Paper Catalog Map** button. The **Installable Options** tab shows two dropdown menus: **External Finisher** (Not Installed) and **Post-fuser Tray** (On). At the bottom are **OK** and **Cancel** buttons.

**11 Click Next.**

You can add additional printers to the Printer Group before you click Next.



The **Add/Remove Printers** dialog box is shown. It has a title bar with a close button. The main text says **Add one or more printers to your Printer Group.** Below this is a **Search** section with fields for **IP/Server Name**, **Port Number** (631), **Server Family** (Xerox), and **Model** (Nuvera 288). There are **Search** and **Auto Discovery** buttons. Below the search section are two list boxes: **Available Printers** and **Selected Printers**. The **Selected Printers** list box contains one entry: 

IP	Printer	Serve
10.64.68.56	DocuTech ...	10.64.

. There are **>>** and **<<** buttons between the list boxes. At the bottom are **Delete Printer** and **Edit/Configure Printer** buttons. At the very bottom are **Next >** and **Cancel** buttons.

**12 Specify Printer Group options and click Next.**

For more information, see [“Setting Printer Group options”](#) on page 3.



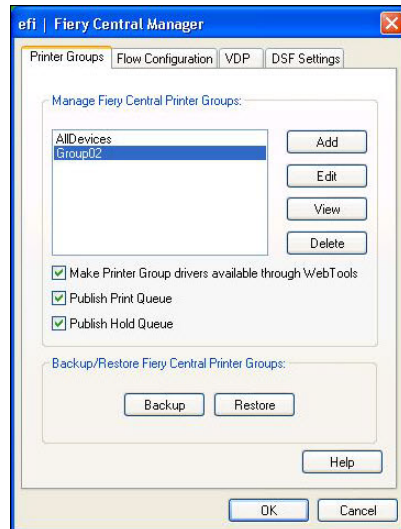
**NOTE:** The available Printer Group options are determined by the printers that belong to the Printer Group. For more information about Printer Group options, see Fiery Central Manager Help or Command WorkStation Help.

**13 Review all the settings that have been selected for the Printer Group that you are creating.**

**14 Click Save to save the Printer Group. Click Cancel to discard the current Printer Group and recreate it with different options.**



- 15 With the Printer Group selected in the Fiery Central Manager Printer Groups pane, select Make Printer Group drivers available through WebTools if you want users to be able to download Fiery Central printer drivers through an Internet browser.



**NOTE:** If you are using a Windows or Mac OS client, this option should be selected so users can download the printer driver files and associated printer files from the Web.

- 16 Select the printer queues that you want to publish (selected by default).
- 17 To save changes and create the Printer Group, click OK in the Fiery Central Manager dialog box.



## View non-Fiery printers in Command WorkStation



Fiery Central is a production workflow solution that uses Command WorkStation for late-stage document editing and job management tools.

For more information, see Command WorkStation Help.

### Connecting to a Fiery Central Server Server

Before you add a Fiery Central Server Server that you want to monitor, make sure that you have the server DNS name or IP address.

If you type an IP address, the Servers pane shows what you typed (IP address). After the server connection is authenticated, the IP address switches to the Fiery Central Server Server name in the Servers pane.

When you connect to a Fiery Central Server, information about the Printer Groups and the printers in each group is automatically displayed in the Servers pane. The status of the printers in each Printer Group is shown automatically.





For more information, see Command WorkStation Help.

### Fiery Central Servers in the Servers pane

The Servers pane shows the authenticated Fiery Central Server connections. Fiery Central Servers appear in the Servers pane with the following indicators:

 Fiery Central Server

 Printer group within the Fiery Central Server

 Generic PostScript printer or non-Fiery printer within the Fiery Central Server

### Viewing consumables

Consumable information is not available for Fiery Central Servers, Printer Groups, non-Fiery printers, or generic PostScript printers.

### Viewing server information

The Server Information tab provides a snapshot of information for the selected non-Fiery printer that you are connected to, including:

- IP address
- System software version number

**NOTE:** Consumables, such as paper tray levels and toner or ink levels, are not available for the non-Fiery printer.

To view a detailed and complete list of Fiery Central Server information, click Device Center > General > General Info.

## Viewing errors and alerts

You can view errors and alerts for the selected Fiery Central Server or the non-Fiery printer that you are connected to on the Errors and Alerts tab (information icon), which is located in the lower-left corner.

The Errors and Alerts tab shows if the non-Fiery printer is Idle or printing, and displays detailed error or alert messages, along with instructions on how to correct the error. To view more specifics about an error or alert, click the More link (if available).

The Printer Group that contains the non-Fiery printer with an error is shown with an error icon in the Server List. The information icon flashes when an error or alert occurs for the non-Fiery printer in the Printer Group. When there is an error, view the information on the Errors and Alerts tab.

Errors and alerts are divided into two categories:

- Non-Fiery printer status
- Printer errors

Non-Fiery printer status is always available for viewing, while printer errors are available only if they are present.

## Fiery Central Job Center

When you select a Printer Group, only the jobs that are assigned to the selected group in the Fiery Central Server are shown in the Job Center. When you select a non-Fiery printer or generic PostScript printer, only a list of Fiery Central jobs are shown in the Job Center.

### TO VIEW FIERY CENTRAL JOBS FOR THE CURRENT NON-FIERY PRINTER

- Left-click a non-Fiery printer in a Printer Group in the Servers pane to view a read-only list jobs sent to the printer.

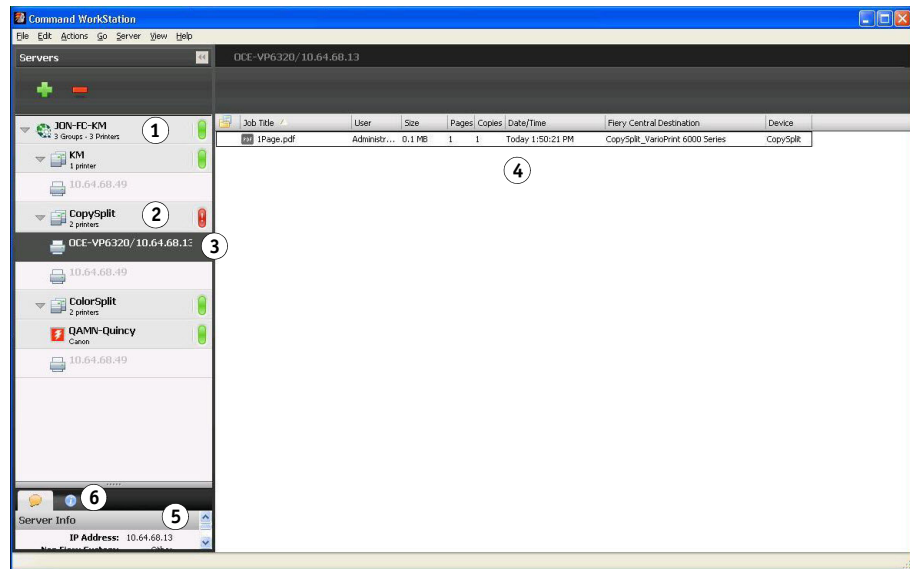
Or

- Select a non-Fiery printer in a Printer Group in the Servers pane, and click **View > Show All Jobs**.

The read-only list shows all printed and cancelled jobs for the selected printer.

Command WorkStation  
window overview:

- 1 Fiery Central Server
- 2 Printer Group
- 3 Non-Fiery printer
- 4 Read-only job list
- 5 Server Information tab
- 6 Errors and Alerts (information icon) tab



## Changing Job Properties for a job sent to a non-Fiery printer

To change the Job Properties for a job that has been sent to a non-Fiery printer, you must cancel the job on the printer or from Command WorkStation connected to the Fiery Central Server. Use the following procedure to change the Job Properties.

### TO CHANGE JOB PROPERTIES FOR A JOB

- 1 In the Printer Group's Printed list of Command WorkStation, right-click the canceled job and choose **Properties** from the pop-up menu.
- 2 Specify the print settings in Job Properties.
- 3 Click **Print** to resend the job to the printer.