

# Fiery Command WorkStation 6.2

What's New Guide for cutsheet users



# What's inside:

Overview of Fiery® Command WorkStation® .....	3
Fiery Command WorkStation Package 6.2 .....	3
New Features .....	5
Specifications for Fiery applications in Fiery Command WorkStation Package .....	6
New Features in Fiery Command WorkStation 6.2 .....	7
A single shared interface for all Fiery Driven printers .....	7
Thumbnail view .....	7
Archive Manager .....	8
Fiery Impose – Duplo finisher layout import .....	9
Fiery JobMaster – Image editing .....	10
Fiery Graphic Arts Package, Premium Edition – Fiery ImageViewer split view .....	10
Fiery JobFlow 2.4 .....	11
Additional resources .....	12

## EFI fuels success.

We develop breakthrough technologies for the manufacturing of signage, packaging, textiles, ceramic tiles, and personalized documents, with a wide range of printers, inks, digital front ends, and a comprehensive business and production workflow suite that transforms and streamlines the entire production process, increasing your competitiveness and boosting productivity. Visit [www.efi.com](http://www.efi.com) for more information.



Nothing herein should be construed as a warranty in addition to the express warranty statement provided with EFI products and services.

The APPS logo, AutoCal, Auto-Count, Balance, BESTColor, BioVu, BioWare, ColorPASS, Colorproof, ColorWise, Command WorkStation, CopyNet, Cretachrom, Cretaprint, the Cretaprint logo, Cretaprinter, Cretaroller, Digital StoreFront, DocBuilder, DocBuilder Pro, DockNet, DocStream, DSFdesign Studio, Dynamic Wedge, EDOX, EFI, the EFI logo, Electronics For Imaging, Entrac, EPCount, EPPhoto, EPRegister, EPStatus, Estimate, ExpressPay, FabriVU, Fast-4, Fiery, the Fiery logo, Fiery Driven, the Fiery Driven logo, Fiery JobFlow, Fiery JobMaster, Fiery Link, Fiery Navigator, Fiery Prints, the Fiery Prints logo, Fiery Spark, FreeForm, Hagen, Inkintensity, Inkware, LapNet, Logic, Metrix, MicroPress, MiniNet, Monarch, OneFlow, Pace, Pecas, Pecas Vision, PhotoXposure, PressVu, Printcafe, PrinterSite, PrintFlow, PrintMe, the PrintMe logo, PrintSmith, PrintSmith Site, PrintStream, Print to Win, Prograph, PSI, PSI Flexo, Radius, Remoteproof, RIPChips, RIP-White-Print, Screenproof, SendMe, Sincolor, Splash, Spot-On, TrackNet, UltraPress, UltraTex, UltraVu, UV Series 50, VisualCal, VUTEK, the VUTEK logo, and WebTools are trademarks of Electronics For Imaging, Inc. and/or its wholly owned subsidiaries in the U.S. and/or certain other countries.

All other terms and product names may be trademarks or registered trademarks of their respective owners, and are hereby acknowledged.

## Overview of Fiery Command WorkStation

Fiery Command WorkStation, the print job management interface for Fiery servers, makes printing more productive, powerful, and intuitive. It centralizes job management, connects to all Fiery servers on the network, and improves productivity. The intuitive interface simplifies job management, regardless of the user's level of experience.

Full cross-platform Apple® macOS® and Microsoft® Windows® support provides consistent functionality, look, and feel. The intuitive interface offers a fully functional remote connection, so users get the same quality results as they do with a local connection to a Fiery server. Fiery Command WorkStation also gives print providers updates that provide usability enhancements for current Fiery servers (Fiery System 10/10e and above) at no additional cost.



This What's New Guide offers information about the exciting new features and functionality in Fiery Command WorkStation 6.2.

Download version 6.2 of Command WorkStation at [www.efi.com/CWS](http://www.efi.com/CWS).

### **Fiery Command WorkStation Package 6.2**

Fiery Command WorkStation 6.2 is part of the Fiery Command WorkStation Package. The download and installation process for this package is handled by the Fiery Software Manager.

The package includes the following software for download:

#### **Fiery Command WorkStation**

Centralizes job management by controlling any Fiery Driven cutsheet, wide, superwide, or high-speed inkjet printers<sup>1</sup> on the network for improved real-time productivity

Fiery Command WorkStation 6.2 includes the following optional makeready software: Fiery Impose, Fiery Compose, and Fiery JobMaster.

#### **Fiery Hot Folders**

Automates job submission processes for repetitive tasks, saving time and reducing print errors with a simple drag-and-drop operation.

#### **Fiery Software Uninstaller**

Easily removes Fiery applications, Fiery Driven printers, and associated print drivers/files on macOS clients.

<sup>1</sup> Refer to the specifications section below for supported Fiery servers.

## Fiery Software Manager

In addition to the Command WorkStation Package, the Fiery Software Manager also installs these Fiery applications:

### Fiery Remote Scan

This TWAIN-compatible application allows users to retrieve scans from a copier and save them or import them directly into a compatible application. Now a standalone application, users have the choice to download and install it on their clients.

### Fiery JobFlow – Windows only

Fiery JobFlow™ enables prepress workflow automation for streamlined job processing and printing. Start with the free Fiery JobFlow Base to manage workflows including PDF conversion, Fiery Preflight<sup>1</sup>, image enhancement<sup>2</sup>, document imposition<sup>3</sup>; plus flexible options for job submission, archiving, and output. Upgrade to the paid Fiery JobFlow version to add more intelligence with rules-based workflows; advanced preflight and PDF editing, powered by Enfocus Pitstop; and cloud-based JobFlow approval processes for maximum efficiency.

### Fiery Navigator

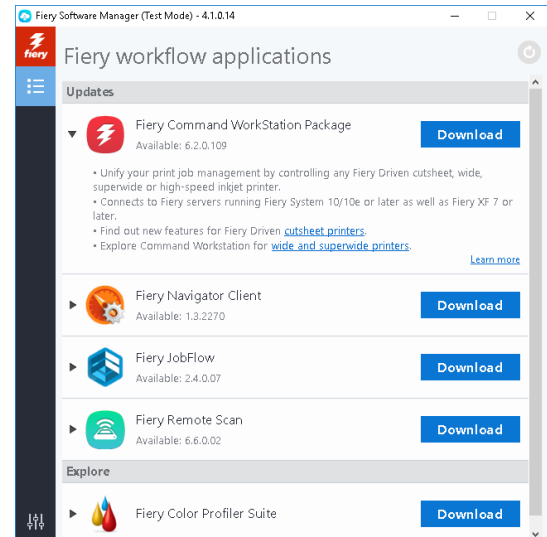
Fiery Navigator is a service for proactive print operation control and device management that captures key production metrics and enables the propagation of configurations across the same Fiery Driven devices.

### Fiery Integration Package – Windows only

The Fiery Integration Package includes Fiery JDF and Fiery API. Users must select “Show additional features” in Fiery Software Manager Preferences to see the Fiery Integrated Package and download it.

### Fiery Color Profiler Suite

The Fiery Color Profiler Suite color management software provides integrated color management functionality and quality control for print systems. It extends the color capabilities of Fiery Driven printers with the most advanced color management tools available for profile creation, inspection, editing, and color quality assurance. Modular functions ensure color accuracy and consistency across design and office applications for all types of media, while increasing productivity and return on investment.



Fiery Software Manager

<sup>1</sup> Requires Fiery Graphic Arts Package, Premium Edition

<sup>2</sup> Requires Fiery Image Enhance Visual Editor

<sup>3</sup> Requires Fiery Impose

## ***New Features***

Continuing the tradition of innovation and value to cutsheet users, version 6.2 delivers new productivity-enhancing features. This guide groups new features and lists the most important changes in the following categories.

- A single shared interface for all Fiery Driven printers<sup>1</sup>
- Thumbnail view
- Archive Manager
- Fiery Impose
  - Duplo finisher layout import
- Fiery JobMaster
  - Image editing
- Fiery Graphic Arts Package, Premium Edition
  - ImageViewer split view
- Fiery JobFlow 2.4

<sup>1</sup> Refer to the specifications section below for supported Fiery servers.

## **Specifications for Fiery applications in Fiery Command WorkStation Package**

These applications can connect to and be installed on:

- Fiery servers running Fiery software:
  - Fiery System 10 or 10e, FS100/100 Pro, FS150/150 Pro, FS200/FS200 Pro and FS300/FS300 Pro servers
  - Fiery XF 7 and above
- macOS clients:
  - macOS X® 10.11 and newer
  - 4 GB of RAM or more recommended
  - 7 GB of available hard drive space
  - Minimum display resolution:
    - For cutsheet users: 1280 x 1024
    - For wide and superwide users: 1600 x 900
- Windows clients:
  - Processor: Pentium 4, 1 GHz or faster processor
  - Microsoft Windows 7, 8.1 and 10 and newer
  - Microsoft Windows Server 2012 and newer
  - 1 GB or more of RAM
  - 16 GB of available hard drive space
  - Minimum display resolution:
    - For cutsheet users: 1280 x 1024
    - For wide and superwide users: 1600 x 900

**Please note that Fiery Command WorkStation 6.0 and later, Fiery Hot Folders, and Fiery Remote Scan do not connect to Fiery servers running Fiery System 9 R2 and earlier, or Fiery Central servers. To connect to those systems, users should install Fiery Command WorkStation 5.8. Find out how to downgrade from version 6 to version 5.8 at [www.efi.com/cws](http://www.efi.com/cws).**

## New Features in Fiery Command WorkStation 6.2

### ***A single shared interface for all Fiery Driven printers***

As print businesses expand to new print technologies and commercial opportunities, Command WorkStation 6.2 allows Fiery users to enjoy the same unified job management interface whether driving cutsheet, wide, superwide, or high-speed inkjet printers from various manufacturers. A single shared interface for all Fiery Driven printers<sup>1</sup> delivers production efficiencies such as:

- Reduced learning curves
  - Fiery Command WorkStation is an easy-to-learn interface for new users. It offers free online educational resources to start managing print production the first day.
  - Operators expanding their knowledge to operate different print technologies will need less time than if they have to learn a different print management application.
- Expands in-house expertise for operational flexibility and more productivity
  - Users only need to learn one interface, so they can more easily switch to other tasks in deadline situations, even if it's not their primary function.
  - Print production on multiple printers can be managed from virtually anywhere. Command WorkStation keeps users informed with live status updates on an engine's production status, minimizing walks to the printers.
- Reduced IT overhead and investment
  - Fiery Command WorkStation simplifies installation and setup procedures with a single application that works for both macOS and Windows clients.
  - Fiery Software Manager groups all the installers to ensure all Fiery applications are accessible, and sends notifications of new releases to keep them up to date.

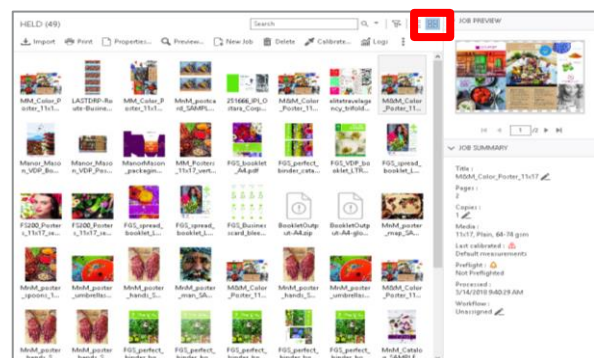
<sup>1</sup> Refer to the specifications section above for supported Fiery servers.

### ***Thumbnail view***

In addition to displaying jobs as a list in the Job Center, Fiery Command WorkStation offers a new way to display jobs within queues or views. The thumbnail view gives users the option to visually identify jobs by the first page preview.

Users can quickly toggle between the job list and the thumbnail view by clicking on the two new buttons on the upper right corner.

With the thumbnail view, users have a quick preview of the content of the job to find jobs faster. They can sort jobs by the same column category displayed in the list view, and see additional information by hovering the mouse over the job such as complete file name, job status, user name, date, and time.



*Thumbnail view*

Other available functions include selecting multiple jobs, and dragging and dropping files to other queues or Fiery servers.

The thumbnail view is the same as the Job Preview view the first page of the job. This means that:

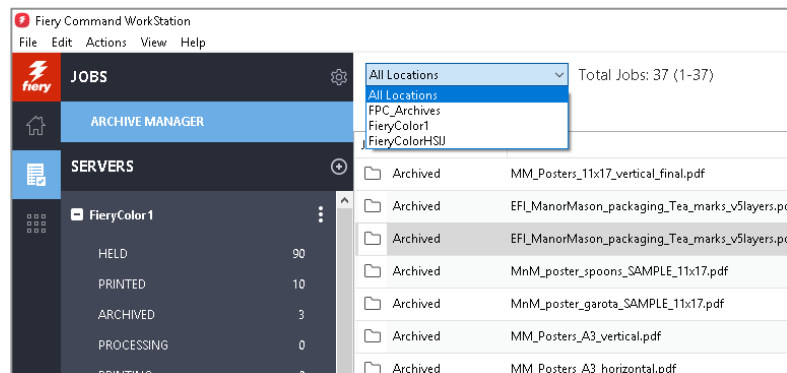
- All processed jobs display a preview
- Spooled jobs display a preview on external Fiery servers running Fiery FS300 Pro and above
  - o You can see previews in spooled jobs for PS, PDF, TIFF, TXT, or EPS formats
  - o Other job formats that aren't supported by spooled jobs preview will display a generic thumbnail
  - o Changes in Job Properties are not reflected in the thumbnail preview. Examples are:
    - Imposed jobs don't display a sheet layout unless they are processed
    - Color management changes only show in processed jobs

Thumbnail view is also available for Fiery servers driving wide, superwide, and high-speed inkjet engines.

## Archive Manager

Fiery Command WorkStation includes a new, simple, and safe storage solution for all Fiery jobs.

To start using the Archive Manager, users are guided through a simple process to migrate all currently archived jobs on a Fiery server, for all connected Fiery servers, to a location that is independent from the Fiery server. Users with administrator rights have the freedom to set up archive folders on the network, cloud, or their own computer.



*Archive manager job list*

Archive Manager offers a much more flexible solution for job storage:

- Job archives can follow the same IT backup procedures as any other digital asset
- Job archives can be easily shared across all connected Fiery servers
- Users can find archived jobs faster using the basic search function, and find jobs even when the Fiery server is disconnected, or is being upgraded or reloaded
- Users can list all archived jobs in one view where jobs can be previewed and searched

If users have archived jobs on the Fiery server, the migration process moves those files to the chosen location through the Archive Manager. This resolves previous issues such as:

- Losing archived jobs during Fiery software reload or upgrade processes
- Not being able to archive additional jobs after reaching 10,000 jobs per Fiery server in all queues
- Risk of locking up your Fiery server from lack of hard drive memory

Archive Manager is only available for cutsheet and high-speed inkjet engines

For more details on Archive Manager visit the [Help documentation](#).



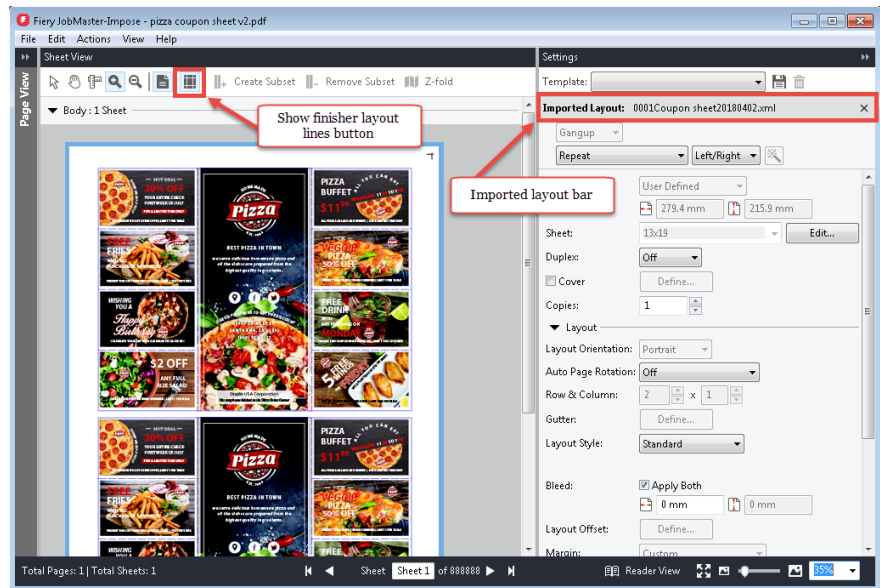
## Fiery Impose – Duplo finisher layout import

Fiery Impose greatly improves the integration with Duplo finishers to automate offline finishing for custom layouts. With this feature, users can import the layout file for the Duplo finisher to set up imposition in seconds and automate future jobs without requiring manual setup on the Duplo finisher.

When users create the layout file on the Duplo finisher\*, they can import this file into Fiery Impose. This will automatically set up the imposition layout as defined by the layout file, which ensures a perfect match with the finisher's settings and minimizes user errors and rework.

While working on the layout in Impose, users have the option to apply additional Impose settings, such as duplex, that will affect only the settings that aren't grayed out. Settings that are grayed out or not enabled, are ones controlled by the layout file and necessary to guarantee precise finishing by the Duplo engine. For additional flexibility, Fiery Impose offers users the option to unlock those disabled features by closing the Imported Layout bar in the Settings panel.

When applying the Duplo layout file to a job with Fiery Impose, users can preview the alignment of the page content with finishing lines set up on the Duplo finisher, such as fold and perforation lines. Just click on the new "Show finisher layout lines" button on the toolbar.



*Duplo finisher layout import*

Users can create a template to automate future jobs. These templates save all the layout settings and provide preview ability for the finishing lines. They can be used in all automation workflows including Fiery Hot Folders, Virtual Printers, server presets, and Fiery JobFlow.

Before the first use, turn on the import feature for the Duplo finisher layout in the Fiery Impose Preferences section.

Learn more about this feature on [www.efi.com/impose](http://www.efi.com/impose).

\*Supported Duplo finishers include the Duplo DC-646.

### Fiery JobMaster – Image editing

The image editing feature enables users to touch up scanned pages without leaving Fiery JobMaster. With it, users can open any third-party image editor installed on a client computer. This might include Microsoft Paint, GIMP, Adobe® Photoshop®, and Preview for macOS.

With it, you can apply most of the commonly used image-editing functions. These can include adding text, pasting or moving objects on the page, and more.

Once the user saves the edits and closes the image-editing application closed, the edits are instantly available to preview in Fiery JobMaster to make editing a seamless and error-free task.

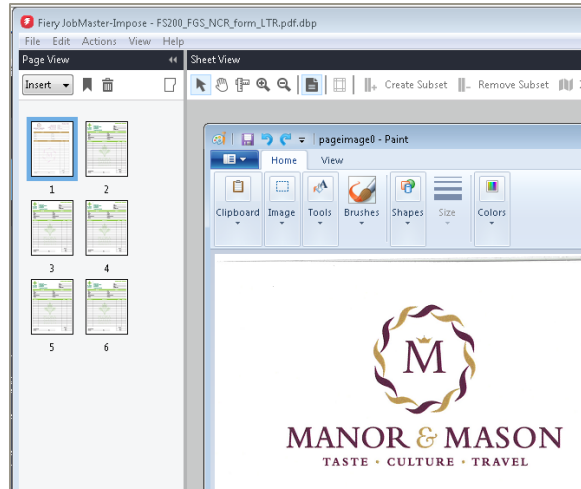
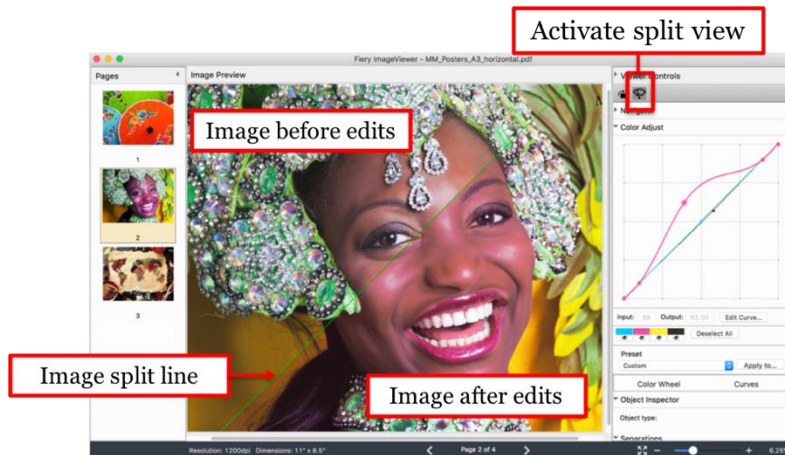


Image editing in Fiery JobMaster

### Fiery Graphic Arts Package, Premium Edition – Fiery ImageViewer split view

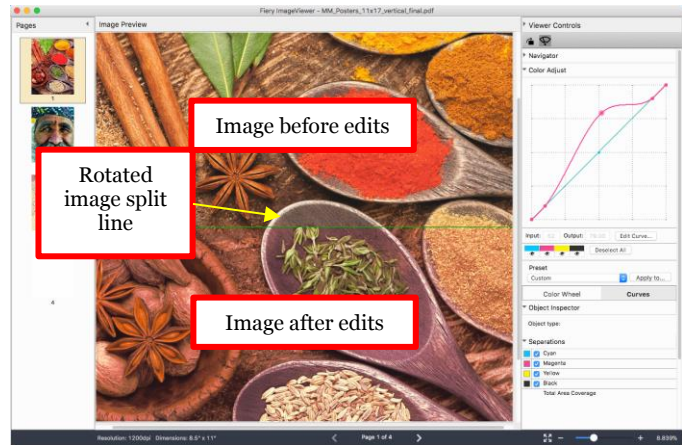
ImageViewer version 4.0\* includes a new split view. This allows users to see color curve edits in a side-by-side before and after view.



Split view in Fiery ImageViewer

To rotate the split view:

1. Activate the split view
2. Hold down Command and Option keys (macOS) or Control and Alt key (Windows), then scroll with your mouse wheel or two-finger swipe on a MacBook
3. The image split line will rotate around the page, enabling a side-by-side view of other areas on the page



Rotation of split view line

**\*Note:** Fiery ImageViewer 4.0 only works on systems with OpenGL version 3.2 and above and a minimum of 750 MB of memory available to the graphics card. Without these, Fiery ImageViewer 3.0 will launch. Fiery ImageViewer 3.0 will launch if you try to log on remotely to the client computer running FieryImageViewer 4.0. Users can check the OpenGL version using third-party software, such as OpenGL extension viewer.

Fiery ImageViewer 4.0 does not support black-and-white output on a Fiery server. If Command WorkStation is connected to a black-and-white Fiery Driven printer, Fiery ImageViewer 3.0 will load.

## Fiery JobFlow 2.4

New features in Fiery JobFlow 2.4 include:

- Support for non-PDF workflows, where JobFlow can process and submit jobs in their native format. Examples include handling XML data, doing a search and replace in Postscript jobs, or converting PDFs to a native format using Fiery JobFlow Connect modules.
- Integration with Enfocus Pitstop 2018 to deliver the latest functionality, including the ability to generate barcodes.

Plus, Fiery XF users can now harness the power of JobFlow workflow automation throughout a unified print room. Benefits to Fiery XF users include:

- The ability to create customizable workflows and action lists to improve production efficiency
- Streamlining approval processes to get jobs produced faster
- Performing automatic image enhancement

## Additional resources

Use this list of sales, training, and technical resources to help you broaden your knowledge of Fiery Command WorkStation plus related products and applications.

Fiery Command WorkStation main webpage	<a href="http://efi.com/cws">efi.com/cws</a>
Fiery Command WorkStation download	<a href="http://fiery.efi.com/cws">fiery.efi.com/cws</a>
Fiery Impose 30-day free trial request	<a href="http://efi.com/impose">efi.com/impose</a>
Fiery JobMaster 30-day free trial request	<a href="http://efi.com/jobmaster">efi.com/jobmaster</a>
Fiery Graphic Arts Package, Premium Edition 30-day free trial request	<a href="http://efi.com/gappe">efi.com/gappe</a>
Fiery JobFlow 30-day free trial request	<a href="http://efi.com/jobflow">efi.com/jobflow</a>
Fiery makeready solutions comparison	<a href="http://fiery.efi.com/makeready-comparison">fiery.efi.com/makeready-comparison</a>
Training resources at Learning@EFI	<a href="http://learning.efi.com">learning.efi.com</a>
Fiery Forums	<a href="http://fieryforums.efi.com">fieryforums.efi.com</a>
Fiery Command WorkStation Help documentation	<a href="http://help.efi.com/cwspackage/index.html">http://help.efi.com/cwspackage/index.html</a>